



Trash Got Your Goat?

7th Annual WNA Cleanup May 8th

Trash Removal, Document Shredding, and Bake Sale Fundraiser for Witherbee Park

Come join us Saturday, May 8th from 8:00 a.m. to 12:00 p.m. on the north side of Hawthorne School, 48th and M Streets. Bring your unwanted items to be placed in roll-offs or recycled.

This year's cleanup will include NEW benefits for paid WNA members. Free disposal of most items is a NEW perk for neighbors who have paid their membership this year.

In past years, with your help and participation, our annual neighborhood cleanup has removed many tons of junk and debris from our neighborhood. Plan to participate again this year. Rid your home, garage, yard, attic, and basement of unwanted items for FREE. We will recycle everything we can. We cannot accept hazardous materials or general household trash.

We also need YOU — friends, neighbors, bring the whole family — to volunteer. Coffee and snacks will be provided to volunteers starting at 7:30 a.m. Volunteers are needed for a number of jobs including sign-in of volunteers at the collection site, helping direct traffic, unload, sort,

Continued on page 10

Neighborhood Participants Needed to Help Make Witherbee Park A Reality

May 6th WNA Meeting Will Address Needs

Think back to some of your fondest childhood memories. Chances are at least one involves a park, playground, or green space of some kind. Maybe the memory includes a parent or other important adult; perhaps it revolved around neighborhood friends. Too often children today are at a loss for the kind of play and discovery that open, green space provides. Author and child advocacy expert Richard Louv directly links the lack of nature in the lives of today's wired generation — a generation he calls nature-deficient — to some of the most distressing childhood trends, such as the rise in obesity, attention disorders, and depression. And it's not just children who benefit from green space, adults do as well.

We are very fortunate to live in close proximity to Woods Park, a wonderful green gem in the heart of the city. Now we have an opportunity to bring another, more intimate place for children and neighbors to gather, play, or just sit and relax, right in the middle of our neighborhood.

Lincoln Parks and Recreation is preparing for construction activities this summer in Witherbee Park, located at

Continued on page 8



We can transform this barren Midtown space into a useable playground/park for everyone to enjoy.

About Your Witherbee Neighborhood Association

Boundaries:

33rd to 56th &
'O' to Randolph Streets

Meetings:

7:00 p.m. first Thursday of each
month at Tabitha Lifequest Center,
48th and J.

www.WitherbeeNA.org

Executive Board:

Rick Bagby, President
488-8567
witherbeerick@gmail.com

Bryan (Bo) Dowling, Vice President
499-2533, bodow57@yahoo.com

Cheryl Hejl, Secretary
489-2557, chejl380@yahoo.com

Shawn Gordin, Treasurer
326-2563, sgordin2@yahoo.com

Curtis Wood, Past President
817-3809, cwood57@neb.rr.com

Additional Board Members:

Jason Brummels 730-5855
jason@drivemethod.com

Nancy Holman 488-6847
nholman@neb.rr.com

Mike Jahnke 484-8975
mdeljah@yahoo.com

Mary Kay Kreikemeir 477-9194
mkk@windstream.net

Tony Marquez 435-3009
netonym@windstream.net
tmarquez@tmcoinc.com

Mary Schwab 440-4131
ohair42@aol.com

Laura Wiese 617-6024
dorbaroy@hotmail.com

Communication Director:

Laura Wiese 617-6024
dorbaroy@hotmail.com

Newsletter:
Larry Frisch 486-9380
larry@npcenter.com

Web Development:
Fred Freytag 430-6658
fred@witherbeeNA.org

President's Message



Rick Bagby

I am happy to announce developments in several long-standing projects:

Witherbee Park — Family friendly improvements for the park are just about here! With Hawthorne School being converted to a high school, where do you take the little ones for a playground outing in the center of Witherbee? What should that park have to make it a walking destination for the family visit? Preserving and enhancing a walkable, liveable family neighborhood is WNA's reason for existence. Greenspace and parks within easy reach of the neighbors are critical to that effort. Final planning is upon us. Major funding has been provided by Lincoln Cares, the donation check-off on your electric bill, and yet there are unfunded portions of the master plan. Several desirable features will be left out unless we take the lead to make it happen. See the article in this newsletter and then join us at the May membership meeting. We want your input.

Tax-exempt status — Our application to the IRS for official 501-3c status as a non-profit organization has been submitted and is under review. Thank you to Curtis Wood for leading this effort.

Communications — We are trying to reach Witherbee residents where they live with useful, timely updates. Witherbee Neighborhood Association is now on Facebook. Find us at www.facebook.com/WitherbeeNA. Reports, photos, and video of The Big Event mulching Woods and Stuhr parks were posted the next day. Find an event calendar and post messages on our wall. A mid-month email will go out with updates to remind us of all the exciting things going on in the neighborhood and the city. How can we do this and still produce the outstanding newsletter you are holding right now?

Everything we do is only possible when someone steps forward and says, "I can help." These latest developments would not be possible without our new Communications Director, Laura Weise. Laura has brought some sense and sanity to our efforts. Laura - Larry Frisch might have pulled out all his hair by now if not for your efforts. Thank You.

Outreach — A Bake Sale has been added to the Neighborhood Cleanup. Hauling recyclables and loading trash may not be your interest on a spring Saturday morning, but how about muffins and kolaches? We are also planning to expand our mid-summer Ice Cream Social and Swim Park in Woods Park with additional information and activities for families. Please plan to attend.

Many hands make light work — Thank you to all who helped in any way with mulching the trees of Woods Park and Stuhr Park on Saturday April 10th; those who held down the home front while others came to the park; those who wanted to come but could only send their best wishes; those who came to the parks to spend a few hours. It was a fabulous spring morning of community building while saving city taxpayers thousands of dollars in labor costs. To the Woods Park Neighborhood Association, Witherbee Neighborhood Association, UNL Big Event volunteers from Phi Kappa Theta, Braeda Café, and of course city Parks Department NE supervisor Chris Myers and the Lincoln Parks & Recreation crew - Thank You. To the rest of the city: You're welcome.

Life — My first grandchild is on the way! My son and his wife are expecting around the first of August. My interest in family-friendly, livable neighborhoods is a bit stronger now - even though they live in Oregon. Please consider how what you do affects future generations. As our grandparents laid the foundation of the life we now enjoy, so are we now laying the foundation for future generations.

Summer Lawn Problems Topic Of June 3rd WNA Meeting



Dr. Gaussoin

Diagnosing summer lawn problems will be addressed by Dr. Roch Gaussoin at the WNA monthly meeting held on June 3rd, 7 p.m., Tabitha LifeQuest Center, 47th and J Sts.

Dr. Gaussoin, well-known as a panelist on “Backyard Farmer”, is a professor of Agronomy and Horticulture and Extension Turfgrass Specialist at the University of Nebraska-Lincoln. Dr. Gaussoin has conducted research on weed and turfgrass management for more than 25 years. He has published more than 80 scientific papers; over 100 trade journal articles and is a frequent invited speaker to turfgrass conferences nationally and internationally. Dr. Gaussoin has received the Outstanding Young Scientist Award from the University of Nebraska and the Presidential Award of Merit from the Nebraska Turfgrass Association. In 2008 he received the Fred V. Grau Turfgrass Science Award, in recognition of significant career contributions in turfgrass science.

What Are We Missing?

We live in a great neighborhood with great people who do interesting things. Do you know of a noteworthy neighbor, unique gathering, funny or moving story, or important bit of neighborhood information? We want to hear from you! Send in your story or public service announcement and when we use it in a future Buzz issue we'll send you a WNA keychain! Send stories (pictures



are welcome too) to Laura Wiese at dorbaroy@hotmail.com or 3911 J St., Lincoln, NE 68510. Be sure to provide your full name (if you'd like credit for your story) and contact information.



Your Neighborhood Store
Located at 33rd & A Street

We are a full service grocery store, providing Fresh Cut Meats and Produce! We pride ourselves on our customer service and strive to help each customer that walks through the door.

Our 8 page Sale Ad starts on Wednesdays, so please stop by and check us out.

We are open 7 days a week, our hours are:

Sunday
8 a.m. - 10 p.m.

Monday - Saturday
7 a.m. - 10 p.m.

We accept Visa, MC, Discover, and EBT.
We also provide Money Orders for a small fee.



July 1st WNA Meeting To Feature Veterans Garden

Dean Clawson, former Lincoln High teacher, and Bill Bowmaster will explain the fascinating story of the Veterans Gardens at Antelope Park.

In 1989 the traveling Vietnam Memorial Wall came to Lincoln. Over 80,000 people visited the monument during its stay. This outpouring of enthusiasm and support led to the creation of the Veterans Memorial Garden.

Founded to remember and honor all veterans of all branches of service throughout the history of the United States, the garden now features more than two dozen individual monuments to the men, women, and animals who placed their lives in harm's way to “secure the Blessings of Liberty to ourselves and our Prosperity.”

Proper flag care will be explained at the meeting, July 1st, 7 p.m., Tabitha LifeQuest Center, 47th and J Sts.

Connect With WNA on Facebook

We've recently added a new way for neighbors to stay informed of Witherbee and other community happenings, connect with others, and provide feedback on WNA issues. To view our page, go to www.facebook.com/WitherbeeNA. If you're already a member of Facebook, click the “Become a Fan” button to join our network. If you're not part of Facebook yet, just click the “Join Now” button to sign up.

Your Neighborhood Family Restaurant

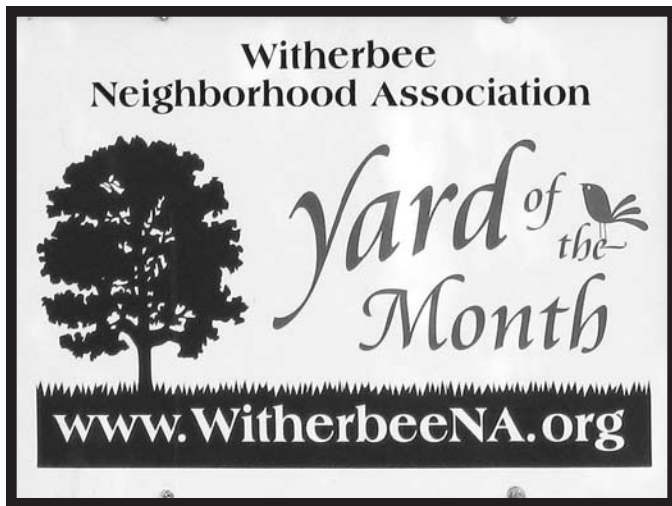
Prompt
Courteous



Friendly
Service

121 North 48th Street
Lincoln, NE 68504
402-467-2674 Free Wireless Internet

OPEN
Mon. – Sun.
24 Hours



Yard of the Month Award

As spring makes its welcome return, Witherbee neighborhood residents are busy planting flowers and vegetables and mowing yards. That means it's finally time for the 2010 Yard of the Month awards!

The Yard of the Month award is given May-September. The recipient receives a sign to place in their yard for the entire month and a write up with photo in the Witherbee Buzz. It's an honor to be chosen for this award, as there are many beautiful yards in our neighborhood.

The Yard of the Month judge will look for yards with:

- * Drive-by appeal (well planned and maintained)
- * Plants with same sun/shade and water requirements planted together
- * Mulching for water conservation
- * Appropriate irrigation (no watering the sidewalk, street)

Yard of the Month standards are based on having an attractive yard that also conserves water. Saving water in the landscape does not mean sacrificing beauty. You don't have to give up your favorite pond or waterfall either. In fact, a yard that has been thoughtfully planted to use less water usually has less disease, insects, and maintenance problems. Starting with healthy soil is the best thing you can do for your landscape. This can be as simple as adding compost (homemade or bought) before you plant this spring. If you've already planted, you can always incorporate a thin layer of compost around your plants before applying mulch. When you water, the compost will break down and fertilize your plants. Using organic mulches that will slowly break down and add to your soil is a good idea too. For information on mulches and other gardening topics, visit the University of Nebraska-Lincoln's Extension Publication website at www.ianrpubs.unl.edu. You can search by topic, publication, and more.

Nominate your neighbor or yourself. Contact Amy Greving at 484-7681. Please leave a message. Include your name, phone number, and address. The Yard of the Month can be a home or a business.

Plant Sale May 8th At West Gate Bank

By Ingrid Kirst

Whether you want to grow your own food in your yard or at a community garden, or purchase fresh vegetables from a local farmer, Community CROPS has an opportunity for you.

Annual Plant Sale

On Saturday, May 8th from 2:00-4:00 p.m., at West Gate Bank (50th and O Streets), CROPS is hosting its annual Plant Sale to raise funds for the community gardens. Every year a wide variety of tomatoes, peppers, cabbage, and many more vegetables are available for purchase at reasonable prices. Perennials, herbs, flowers, and house plants are always available too. All proceeds from the sale are used to support community gardens in Lincoln, and the high quality plants available are always praised for their excellent production. A new feature this year is that we will accept SNAP (food stamps) at the sale for purchase of any vegetable plants.

Classes

For anyone who wants to learn more about growing their own food, whether in a community garden, or their own yard, Community CROPS offers a wide range of classes on getting a garden started, composting, fall gardening, and many other topics throughout the year. We will also offer classes on cooking with fresh produce during the growing season.

Upcoming classes include a Beginning Gardening Class, Tuesday, April 27 at 6:30 p.m., location TBA. Come learn the basics of growing your own food from Twyla Hansen, a local garden expert. Classes on rain gardens and rain barrels as well as more gardening classes will be coming up in May. Check our website for details.

Community Supported Agriculture

Finally, if you want to leave the growing to someone else, the CROPS Community Supported Agriculture (CSA) program lets you purchase a share in the harvest from the CROPS Growing Farmers Program. CROPS staff work with a small group of beginning farmers who are growing and selling fresh produce at our farm business incubator site.

Visit the CROPS website at www.communitycrops.org or call the Community CROPS office at 474-9802 for more information on any of these projects.



327-0705

Hours:
M.-F. 8-6
Sat. 8-12

Jeff Jacobson, DVM

4145 "O" Street

Visit our website for useful information about your family pet. We Care.
www.jacobsonvet.com

Meet Our Neighbor Joan Wells

By Curtis Wood

Joan Wells is a native of nearby Seward so she has not moved far but has traveled far and wide as a trick roper. She won the Women's World Champion Trick Roper at the Will Rogers Centennial Trick Roping Contest in Claremore, Oklahoma. Joan was later inducted into the National Cowgirl Hall of Fame and Western Heritage Center in Ft. Worth, Texas in 1989. Joan is one of only three Nebraskans who have attained this honor. (A name familiar to many is Willa Cather who was the first inductee from Nebraska.) She often travels back to the Hall of Fame to honor other inductees as each class is inducted. Joan has performed all over the United States including doing a half-time show in the Devaney Center during a University of Nebraska basketball game.

Joan is also an accomplished musician and plays often around Lincoln. I have attended one of the events held at Mo'Java Coffeeshop in University Place. The group is named "Crabgrass" and features Joan as lead guitar, rhythm guitar, and singing bluegrass and western music. She has mentioned the possibility of performing for a Witherbee event some day. In my experience the small and very professional group presented a thoroughly enjoyable performance. It is obvious that music is very important and enjoyable to the members of the group and they share that enthusiasm with their audience.

Joan has a large assortment of rope tricks that have great names like the Butterfly, Big Loop, and Ocean Wave. She set a record in the Guinness Book of Records for 187 consecutive skips through a vertically spinning loop, a routine called the Texas Skip. Not bad for a city girl who didn't even own a rope or horse until she got bit by the bug to perform and started attempting tricks with her jump rope. It was obvious at this early stage that Joan had a talent, which her father helped her develop through many rodeo trips and other events. In addition to the support she received from her father, Joan was also mentored



Daren Blythe, banjo, Joan Wells, guitar, and Kris Simon, bass guitar provide bluegrass music

by world champion Jim Eskew, Jr. who helped her perfect her natural talent.

If you have a chance, welcome Joan to the neighborhood and try to talk her into performing at a Witherbee event, either with a rope or with guitar and microphone – we won't be choosy!

Stuhr Park Potlucks Announced

For the past five years Witherbee neighbors have held potlucks at Stuhr Park on a regular basis. Cheryl Hejl has been the central organizer of this event that has drawn up to 40 people, with live music on some occasions.

Cheryl has announced the following dates for the event, with the starting time around 6 p.m.

**May 16, June 13, July 11,
August 8, September 12, October 3.**

All Witherbee residents and their guests are welcome to attend. Please bring a dish to share, as well as your own table service. Ice tea and lemonade will be provided. In the event of rain, plan to meet at the next scheduled potluck.

Stuhr Park is located at 51st St., between M and L Streets. Please direct questions or comments to Cheryl Hejl, 489-2557.

MULCH FOR SALE

MADE LOCALLY BY **HOFELING**
ENTERPRISES, INC.

- **Dyed Double Ground Mulch:** \$31.00 per Yard*
(Dark Walnut, Black, Red)
- **Natural Double Ground Mulch:** \$18.00 per Yard*

*Per-yard price does not include sales tax or delivery fee (\$50 inside the Lincoln City limits).

Hofeling Enterprises has been serving the Lincoln community for over 16 years, and appreciates your business! Please come visit our location and check out our products. We are located off of West South Street.



Hofeling Enterprises

2200 S. Folsom Ct. Lincoln, NE 86522
(402) 438-8733
www.HofelingEnterprises.com

“I’m Here to Stay”

By Jackie Varicak

The lure of a \$6,500 tax credit along with the encouragement of relatives nearly caused my family and I to move away from our beloved home, neighborhood, and community. My husband and I searched last November, December, and January and found a much larger home in a great area of town which we decided to buy.

The large home appealed to us since our current 1100 square foot home is small for our family of six. That did not deter our seven year-old son to declare to us that, “this house is like a mansion to me,” in trying to convince us he did not want to move! He has friends in the neighborhood and he can walk to school.

Tears flowed from our 15 year-old daughter’s eyes at the thought of leaving behind the choke cherry tree we had planted 11 years ago in our backyard in memory of her grandmother. Grandma, who is my mother, was buried in Calvary Cemetery which is located just behind the fence of our back yard. How could I leave her?

My husband and I thought about the children’s concerns and decided we were choosing where we will live long term while the children will grow up and move away regardless. So on with the moving plans we went.

We decided to sell our house on our own. We had some help from the sellers of the house we planned to buy because they were both real-estate agents. They came through our home and felt we could get it sold within two months. They took their house off the market to give us that amount of time to sell our home. This was very appealing to us and drove us to move forward in selling our home to buy theirs.

We went so far as putting together a for-sale sign in the front of our house. We posted our home on the Internet and were just about to run an open house ad in the newspaper when I decided to stop the whole process cold turkey.

I just could not bring myself to put that for sale sign in our yard. I had to convince my husband why I had a change of heart and these are the reasons why:

First, our church and school are 5 blocks away from our current home. We dearly love St. Teresa’s Parish and the many wonderful people. The church has a 24-hour



The Varicak family plans to stay in the Witherbee Neighborhood. Left to right, Daniel, age 2, Jackie, Neighbor Edward Hatcher, Cole, age 10, Will, Eric, age 7, Michaela, age 15.

adoration program where someone is always at church praying. My hour is on Sunday evenings. I just could not move far away from my dear church.

The school is fabulous. One bright young alumni of the school, Ben Kotopka, received the Presidential Scholar award in 2009. My own 10 year-old son enjoys being in a reading classics group called “Page One”. The academics of the school and its extended programs are superb. I didn’t want to take my well-adjusted children out of this wonderful school.

Next, the neighborhood and community are great. We live right around the corner from popular Woods Avenue on 38th Street. My close neighbor, Mary Kay Kreikemeier, recently counted how many children live on the five block stretch of Woods Avenue and she came up with 59. Where else in Lincoln are there so many children living so close and with such great access to the pool, park, tennis complex, and trails that are provided at Woods Park? I realized I would be leaving that all behind.

Continued on next page



EDWARD F. HOFFMAN
ATTORNEY AT LAW

1024 “K” STREET • LINCOLN, NE 68508
E-MAIL: ED@CADALAW.COM
OFC: 402-477-2233 FAX: 402-477-2286
WWW.CADALAW.COM

We offer two great services to Witherbee residents



Inspiring Natural Family

- cloth diapers & accessories
- slings & wraps • natural products

435-6767
3120 'O' ST.
www.circleme.me

Stop Suffering — Start Living

We believe that by getting to know the client and helping them with their pain, they will be empowered both physically and personally.

476-6767
3120 'O' St.
www.trinitychiro.com



TRINITY CHIROPRACTIC
balance your mind, body, & spirit

“I’m Here to Stay” Continued from prev. page

The Witherbee Neighborhood Association is one of the strongest in Lincoln and continues to make this community clean, safe, and friendly through its dedicated board and many projects which keep this area a great place to live. Why would I want to leave this umbrella of support?

I must admit that an important factor in my decision was that I couldn’t stomach the higher monthly mortgage payments that would have come with the purchase of a much larger home. The price wasn’t worth what our family would be giving up.

Lastly and possibly the most interesting is that I am attached to the cemetery behind my house just like my 15 year-old daughter is. I know many great souls who have been laid to rest back there.

Jennifer Finder, a young mother who succumbed to breast cancer, is buried directly behind my house. Her story made news because she first battled her cancer while she was pregnant. She has touched many lives through her fight to save her life and that of her child. Her son survived.

Madonna Addison, my daughter’s first grade teacher, is now buried back there. She battled cancer along with my daughter during the time my daughter was in her class. She will always have a special place in our hearts.

Nathan Raun, who died of a brain tumor at the age of 13 is back there. He still touches lives. New York Yankee pitcher Joba Chamberlain played youth baseball with Nathan and continues wearing a version of Nate’s number 8. Joba’s is now 62. You’ll hear New York Yankee announcers talk about Nathan’s impact on Joba’s life often during games.

The list could go on and on about the cemetery. It is truly a treasure right in our midst. I feel privileged to live by it. It always helps me remember how I should live my life! Why would I give that up? By the way, walking or running twice through the streets on the inside edge of the cemetery is one mile.

I’ve decided I’ll just add on to my house and make it bigger.

I’m here to stay.

FREE Health Care Resource Guide

Call Today!

486.8559
Tabitha.org



Bake Sale Fundraiser for Witherbee Park During May 8th Cleanup

Witherbee will hold a bake sale to benefit Witherbee Park during the Neighborhood Cleanup on Saturday, May 8th, at Hawthorne School (48th and M) 8 a.m. to noon. All proceeds go to the Witherbee Park playground development to help cover the shortfall of funds needed to complete the master plan.

We need your help. Anyone wishing to provide baked goodies such as cakes, pies, cookies, bars, muffins, rolls, and breads will be greatly appreciated! Bake it or buy it, donate it and we’ll sell it. We will be happy to pick up your fresh baked goods the night before the sale or you can drop them off at the location early in the morning. Invite all your friends and family to stop and buy some home-baked goods. Great gift and surprise for Mother’s day! And, because of a charitable donor who will match all Witherbee Park donations up to \$1,500, your bake sale purchase will automatically double in its value for the park!

Please let us know if you are planning to contribute to the sale. Contact Linde Matthiesen at bakesale@witherbeena.org or call 499-2100, or Fred Freytag at fred@witherbeena.org or call 430-6658.

SUPER SAVER

48th & O St.

Love Coupons? visit www.Super-Saver.com
for Great Savings with Web Coupons

Snip & Super Save!



Always Save
Ice Cream 1/2 gal.



Always Save
FREE
with additional \$10 purchase

PLU 699 **Good at 48th & O location Only**

limit one per coupon per person - expires July 31st, 2010

Store Phone 464-8552
Pharmacy Direct Line 464-8822

We Sell For LESS!

Good at 48th & O location Only

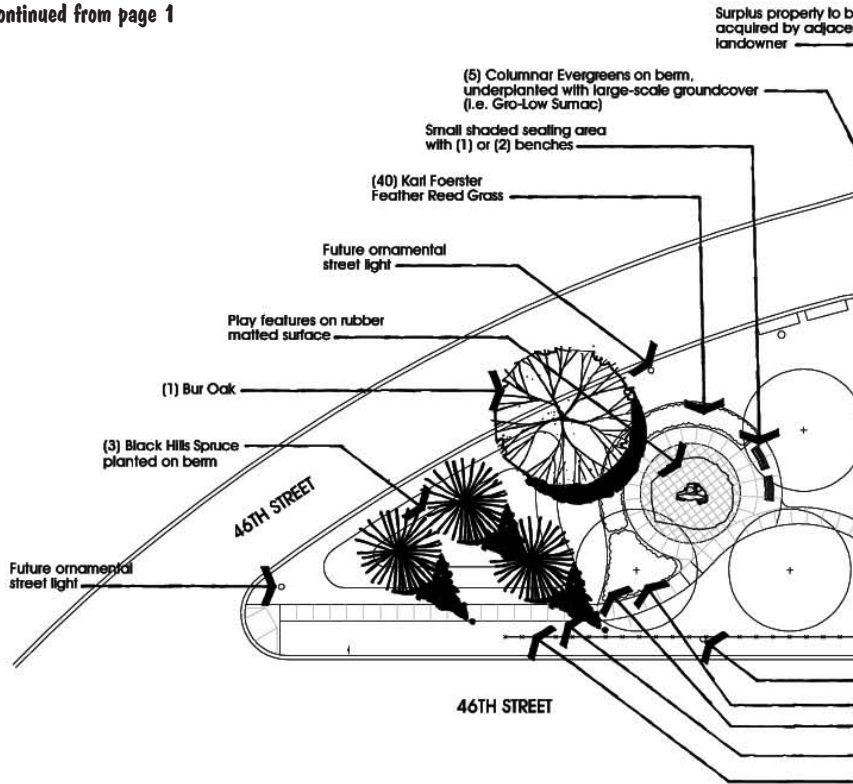
Neighborhood Participants Needed to Help Make Witherbee Park A Reality

Continued from page 1

46th and 'O' Streets. A large portion of this park project is being funded by the Lincoln Cares Program. But we are still approximately \$5,500 short of the budget estimate for the complete park plan.

As shown on the master plan developed and refined with WNA representatives, the primary improvements to the park will consist of a climbing boulder play piece surrounded by rubber matting tiles for fall protection, a black vinyl-clad chain-link fence located along the eastern edge of the park, a seating bench, landscaping (turf, trees, and shrubs), and a park identification sign.

An anonymous donor has stepped forward and committed to donating up to \$1,500 in matching funds. When you donate \$10, \$20, or more, your donation will be doubled. But we cannot receive these generous funds without your donation. If you are in a position to give a larger amount, you can choose to sponsor a specific item like the bench, or part of it, and be recognized on a plaque. Contact us for more information about these sponsorship options.

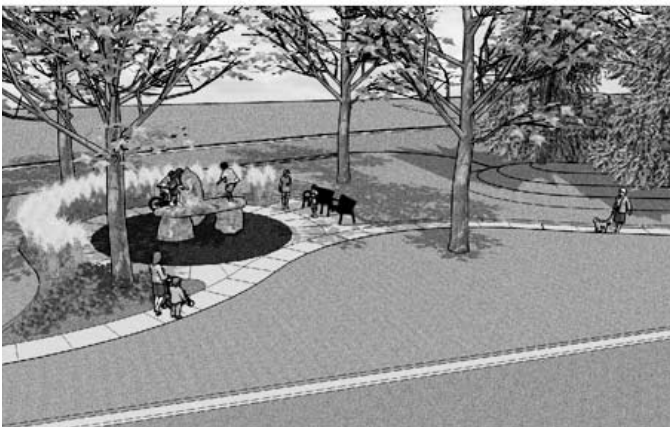


Park Item	Budgeted Cost
Climbing Boulder Play Equipment (including rubber surfacing tile)	\$15,200
Concrete Playground Subbase and Perimeter Walk	\$1,500
Fence (42" black vinyl clad chain link)	\$3,800
Park Identification Sign	\$400
Park Bench	\$1,600
Trash Receptacle	\$500
Landscaping (turf/shrubs/trees only, does not include labor)	\$2,500
Water Source and Quick Coupler for Irrigation	\$5,000
Total Estimated Cost	\$30,500
Total Lincoln Cares Contribution	\$25,000
SHORTFALL NEEDED	(\$5,500)

We need your help to ensure nothing is eliminated from the master plan and the park is completed as we envision it.

Ways you can help:

- Attend the May 6th meeting, bring your ideas and learn more about the park project
- Volunteer to help landscape the park, thus reducing costs (landscaping may include shaping earth berms, planting new trees and other plants, and routinely watering new trees and plants to aid in their establishment)
- Volunteer to adopt the park and help in on-going maintenance such as litter control



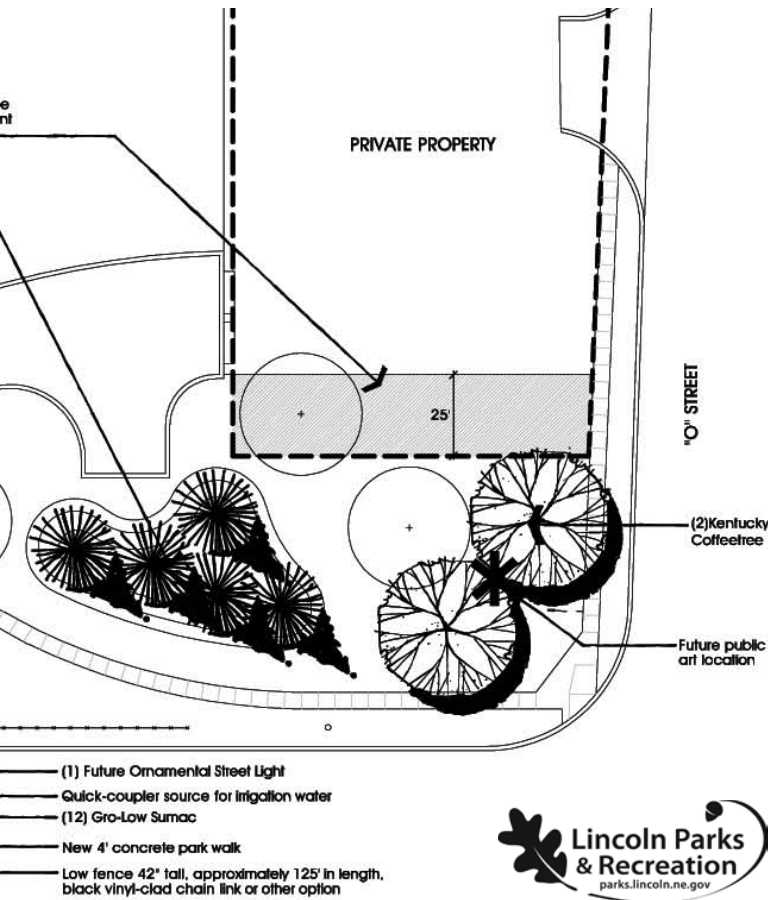
Plant material would be used to soften playground edges and planted berms would screen traffic.



Friends,
It has been a pleasure to serve you in the Nebraska State Legislature for the last four years. I have worked to create jobs, lower taxes, and maintain an honest and open government. As always, I appreciate your input and look forward to hearing from you. I look forward to serving the 28th District for another 4 years. I hope on **May 11th, I can count on you to vote Avery for Legislature.**
Sincerely,
Bill
Senator Bill Avery

Please visit my website at AveryForLegislature.com to give me your thoughts.

Paid for by Avery for Legislature, 1925 E St., Lincoln, NE 68510



Walking to School Plays Role in Children's Health

It's 9:00 a.m. on a weekday; do you know where your city's pollution is? It's concentrated right where our children are — hovering around schools as cars idle for the daily drop off. Rick Helwig, of Safe Routes to School, explained at the WNA April meeting, "At this time of day, our schools are some of the most polluted areas in the city."

Helwig cited some shocking facts, "Within Lincoln Public Schools, approximately 30% of children are considered overweight or obese, 15% of K-8 children are obese."

The good news is the simple act of walking to school can help counteract these troubling trends. However, walking to school is often no simple task.

What you can do:

- Encourage walking; participate in or help organize a Safe Walk Day at your school
- Get involved in your PTO to support pedestrian safety and children's health
- Talk to community and government leaders about the importance of safe routes to school
- Organize a Walking Bus (group of children walking to school with one or more adults)
- Lead by example and wear a helmet when biking; insist young people do the same

Learn more at www.SafeRoutesNE.com or contact Rick Helwig at rickhwg@earthlink.net.

- Send your tax deductible donation for Witherbee Park to the Lincoln Parks Foundation (be sure to designate your funds as going to Witherbee Park), and your donation will be doubled.

To donate:

Lincoln Parks Foundation
www.lincolnparks.org/contribute/donations.htm
 441-8258

To volunteer:

Fred Freytag
fred@witherbeena.org
 420-6658

WNA wishes to thank Tabitha for being a great neighbor and providing meeting space for us each month.

PEOPLES Choice
Federal Credit Union

Free Checking • Visa® Debit Cards • Online Account Access
 Bill Pay • Competitive Loan Rates • Share Certificates

NCUA

2500 "N" Street
 Lincoln, NE 68510

402-475-7059

6700 S. 70th Street
 Lincoln, NE 68516

Completely Free Checking



Is your current checking account costing you more and giving you less? With Completely Free Checking from West Gate Bank, you get more. *More value. More flexibility. More control.*

Stop by West Gate Bank at 50th & O Street today to find out more about Completely Free Checking and ask how you can get free money and a free gift!

West Gate Bank really is Lincoln's Bank.

WEST GATE BANK
 LINCOLN'S BANK



member FDIC www.westgatebank.com

7th Annual WNA Cleanup May 8th Continued from Page 1

and organize items, collect recycling fees, issue brush coupons, assist refuse haulers with block-by-block curbside pickup, and much more. We also need volunteers with pickup trucks and/or trailers to help collect recyclable items at curbside or take a load to EcoStores. Cleanup volunteers should report to the north parking lot of Hawthorne School starting at 7:30 a.m. Please bring your own work gloves. If you can help us with this year's cleanup please contact us in advance so we can assign volunteers to specific jobs. Contact our volunteer coordinator, Mary Schwab, at volunteer@witherbeena.org or 440-4131.

NEW this year! FREE residential document shredding. Shredding Solutions (a Palmer & Sons Company) will provide FREE document shredding to paid members of WNA for up to 50 pounds and \$0.13 per pound over that. Non-member fee is \$0.13 per pound. This is an inexpensive way to rid your home of unwanted confidential data. Regular minimum cost is \$25 for up to 75 pounds. Bring items like tax records, financial records, payroll records, personnel files, legal documents, cancelled checks, account records/ledgers, computer printouts, medical records, lottery tickets, etc. Please check with your accountant or tax advisor about how long documents should be kept. Staples do not need to be removed. Contact us if you have questions.

**Breakfast
Lunch
Dinner**



Witherbee

**Two Dine for
\$9.99 at Braeda®**

**Two 1/2 & 1/2 Meals of your
choice for a great price!**



Good at the 48th & O location only.

Offer includes soda or iced tea as the drink.

Additions & substitutions extra. Expires 6/30/10.

Also NEW this year for FREE, we will collect used compact fluorescent bulbs for proper disposal. They are considered a hazardous waste and need to be disposed of properly. Please place them in a paper bag for transport. Also bring us your old car and truck batteries or any lead acid battery for recycling.

Cleanup waste items accepted for FREE: Furniture, lumber, screens, windows, doors, grills, junk, landscape timbers, picnic tables, swing sets, clothesline poles, broken fences, construction rubble, carpet, and non-Freon appliances (stoves, washers, dryers, and hot water heaters), computer CPUs/mouse/keyboards. **These items can either be picked up at curbside or brought to 48th and M for disposal.**

Items accepted for a nominal fee (or FREE to paid WNA members): Appliances with Freon (refrigerators, freezers, dehumidifiers, and air conditioners) \$10 each. Car/pickup truck tires \$3 each; large pickup truck tires \$6 each; farm tractor tires \$11 each. For tires with rims add \$1 each. Computer monitors up to 32" \$10 each.

Recyclable items accepted for EcoStores Nebraska: Donations of quality, reusable building materials and supplies. General home remodeling and construction supplies, aluminum windows, plywood, 2x4s (or any width, but must be 5 foot or longer), kitchen sinks and faucets, (stainless steel or cast iron), anything metal (brass, copper, etc), latex paint that is less than one-year-old. Be aware the generous people of Nebraska may overstock EcoStores in some departments. Please check with them before you donate, call 477-3606 or www.EcoStoresNE.org. EcoStores is located at 530 W. P Street.

Curbside pickup will be available again as long as you have items to the curb Friday night. If you wait until Saturday morning they will be missed. Jay Carter Refuse, Niederhaus Brothers Refuse Inc., and Paragon Refuse will again be donating their services. Each will canvass assigned areas of the neighborhood and pick up acceptable waste items at the curb for free (NO household trash/garbage, yard waste, or business waste). If you have items that can be recycled, need help with hauling items to the roll-off site, or if your items have not been picked up by 10 a.m. call Curtis Wood at 817-3809.

FREE brush disposal is offered again this year. Scott Hofeling, a long-time Lincoln Arborist with Hofeling Enterprises, has joined the effort. They will take your brush for FREE on Saturday, May 8th when you **bring it to their location at 2200 South Folsom Court**. While you are there, be sure to thank them for helping us save grant money, and check out the great low cost wood mulches they have for sale. Coupons for free brush disposal at the city landfill are available during cleanup, or call Fred Freytag to receive yours. Coupons may be used to take a load for free (normally \$11 and up) from now until the end of the summer. The coupons will not be accepted for commercial use, trash, leaves, or yard waste.

Items that CANNOT be accepted: Ammunition/explosives, automotive waste, chemicals, televisions over 32", microwaves, grass or leaves (yard waste), heavy metals (thermostats, thermometers), liquid waste, paint or solvents, pesticides, propane tanks and gas cylinders, household hazardous waste, or unidentified containers of waste. PLEASE TAKE THESE ITEMS TO A HOUSEHOLD HAZARDOUS WASTE COLLECTION. See schedule on Calendar, page 16, or visit www.witherbeena.org for locations and dates.

If you have any questions or comments, please contact cleanup@witherbeena.org, Fred Freytag at 430-6658, or Mary Schwab at 440-4131 or volunteer@witherbeena.org.

See you at the cleanup. Thank you in advance to all volunteers, sponsors, and participants!



Over 50 volunteers mulched trees at Woods Park



Mulching trees at Stuhr Park were (left to right); Brian Petersen, Trent Dowling, Kathy Frey, Jean Dowling, and Bo Dowling.

Largest Turnout to Date for WNA Big Event

It could have been a desire to say good-bye to a long, snowy winter, the picture-perfect weather, the fact that Earth Day is just around the corner, a little peer pressure, or it could have been the free donuts and coffee donated by Braeda. Whatever their reasons, more than 50 enthusiastic volunteers gathered at Woods Park April 10, to help ready the park for summer.

For the third year in a row, Witherbee teamed up with UNL students during the “Big Event” day of community service. The Big Event is a national movement that started at Texas A&M in the early 1980s. Since then, universities throughout the country have looked for creative ways to help their communities. UNL’s Phi Kappa Theta fraternity sent 27 students to help WNA and Woods Park Association members spread mulch around the trees at Woods.

Jose Melero, a freshman from Laredo, TX says the Big Event is “a good cause, and a way to give back to the community,” even though Lincoln is not his hometown. Matan Gill, also a freshman and student coordinator for the Woods Park site, reported there were more than 2,100 students at dozens of community sites across town.

Steve Schwab, WNA project coordinator and Lincoln Parks Department employee, said the day “translated to 160 hours of volunteer work.” The City Parks Department estimates one volunteer hour equates to a \$20 donation, and overall the service project equated to a \$3,200 contribution to the city.

Fiona Fitzgerald, a sixth-grader at Saint Theresa’s, wasn’t thinking about the money or hard work involved. She attended the event with her father, Mike, because “it’s

fun hanging out with WNA people, and eating donuts.” Mike echoed the sentiment and added, “I volunteer because I value the neighborhood and feel I have an obligation to give back.”

Schwab stressed the importance of the project, “mulch provides a protective space between the tree’s bark and mower blades, and helps retain moisture by reducing turf competition at the tree’s base.” Schwab added, “mulch is a great way to recycle, much of it came from Christmas trees and other wood waste,” which is ground up and repurposed by the City. Mulch also adds to the esthetic look of the park. Approximately 400 trees were mulched.



Special for Witherbee Residents

**Get 250 POINTS when you signup
with Promo Code Buzz250**



- Weekly Curbside Recycling Service
- Recycle More No Sorting Required
- Earn up to \$40 a month in Valuable Discounts at Stores like-
 - Hy-Vee
 - daVinci's
 - Runza
 - Gordman's
 - Hundreds more

Service Includes Cart

**For Service call 466.0412 or
Visit www.recyclelink.net**

RecycleBank is a subsidiary of RecycleRewards, Inc.
RecycleBank is not a financial institution.

Julie Felzien
435-0806

Piano Lessons

Ages 7 to Adult • Flexible Scheduling

30th & Randolph

www.itsallpiano.com

Garage Sale Time...

Turn your clutter into cash!

Witherbee Neighborhood Garage Sales June 10-12

Here's your chance to get rid of those treasures lingering in your garage, basement, or extra bedroom. Residents of the Witherbee neighborhood are invited to participate in the 2010 garage sale extravaganza Thursday, June 10 through Saturday, June 12, 2010.

The Witherbee Neighborhood Association will do the advertising for YOU! An ad will be placed in the Journal Star, on the KOLN-KGIN, KLKN, KFOR calendar of events web pages plus signage and fliers will be available at local businesses. You can also 'spread the word' by telling friends and coworkers about the neighborhood sales.



You may choose, at your own expense, to place your individual ad in the Journal Star Garage Sale section. If you choose to do this, begin your

ad with the word 'Witherbee' and all of the ads will be grouped together in the garage sale section of the classified ads on June 10, 11, and 12.

This event brings people from all over Lincoln into our neighborhood to see our quality of life and get the chance to find some great bargains and choice goodies.

Four dollars is all it takes to have your garage sale listed on the WNA map, fliers, and website. In addition, prior to sale dates, when you drop off your \$4 you will receive a full color WNA GARAGE SALE yard sign along with a map indicating all of the sales in the WNA area.

Complete the coupon at the bottom of the page and drop off or send with your \$4 to:

Nancy Holman
601 South 46th Street
Lincoln NE 68510

Deadline for registering your sale is **May 29th, 2010**

Wyuka Plans Upgrades To Park and Stables Building

Progress is steady on the planned preservation projects at Wyuka Cemetery, according to Wyuka Historical Foundation executive director Lori Merliss. "The Park and Garden renovation will begin this summer," she said recently. "We are working hard to raise the last \$20,000 that we need to complete the project." The \$200,000 project will renovate the five-acre site behind the main building which includes a small lake and historic bridge.

"The Stables historic preservation is also moving forward," Merliss continued, "after years of work by a number of people to secure funding." The project is being funded by a historic preservation grant from the federal Transportation Enhancement Program, administered by the Nebraska Department of Roads, and a match provided by a generous donor. A project team met in March. The design and engineering process is beginning, with the goal of beginning construction in 2011.

The two projects compliment each other by providing indoor and outdoor space for community use and enjoyment. The Park and Garden will make the lake area behind the cemetery's main building more accessible and usable for the community. For the first time it will be possible to walk around the lake on a new walking path. The circa-1906 bridge will be repaired, and a new prefabricated bridge will be built over the south end of the lake. The lake banks will be re-graded to prevent erosion. Park furniture will be installed to make a visit to feed the ducks and geese more enjoyable. The Park and Gardens project is scheduled for completion by grand opening day Sunday, October 10.

The Stables building will provide public meeting space in the outdoor courtyard and in an adjoining indoor classroom that will be available for use year round. Public restrooms will serve both the building and the park area. Both the Stables and the Park and Garden will be available to the community for gatherings and events of all kinds. "We will continue our partnership with the Flatwater Shakespeare Company," said Merliss.

For more information, contact Lori Merliss at Wyuka, 474-3600, or lmerliss@wyuka.com.

Witherbee Garage Sale Sign Up

Please clip and drop off or send with \$4 to Nancy Holman, 601 So. 46th, Lincoln, NE 68510 prior to May 29th. Make checks payable to Witherbee Neighborhood Assn.

Name _____ Ph. No. _____

Address _____ Time of sale _____

Sale items 25 words or less: _____

Tabitha Breaks Ground on Assisted Living

By Eldonna Rayburn

Tabitha Health Care Services hosted nearly 150 community members on a partly cloudy and windy April 6, for the ground-breaking of the new assisted living and memory care.

Joyce Ebmeier, Vice President, Strategic Planning, Tabitha Health Care Services, emceed the event, which was held on the southwest corner of Tabitha's campus.

"In the 1970s, when Bachman Turnover Overdrive sang, "You Ain't Seen Nothin' Yet," they may not have been thinking about today, but, as we consider what's just ahead, peaking over the horizon for Tabitha, it seems a fitting anthem," said Ebmeier.

Christie Hinrichs, Interim Present and CEO, Tabitha, shared the vision for how this new project will serve the community and unveiled the rendering depicting the three-story facility and surrounding garden and recreational space.

"We believe in measuring success in the smiles, laughter and tears of purposeful lives fully lived," Hinrichs said. "Compassion and care underpin all we do so as we break ground today on our newest project, a 63-unit assisted living facility with 48 units specially designed for memory care."

This new community will provide Lincoln with the newest choice in assisted living including spacious, maintenance-free residences, around-the-clock personal care, enriching activities and innovative technology. Residents will enjoy onsite dining, beauty and barber services, secure, underground parking and a variety of social, leisure and spiritually themed spaces perfect for community and private gatherings. Residents will have easy access to other services in Tabitha's continuum including home health nurses, therapists, rehabilitation, wellness facilities and more

"I want to say how proud the Lincoln Chamber is to



Digging in to begin construction on Lincoln's newest choice in assisted living.

work with you as a partner, building this community and growing jobs," said Wendy Birdsall, Executive Director, Lincoln Chamber of Commerce.

Pastor Rick Hinger, Director of Tabitha Pastoral Care, shared a prayer to bless the construction site and workers for the upcoming 14-month project. Chamber Ambassadors, Tabitha staff and board members, project members and neighbors lined up behind 10 gold shovels to commemorate breaking ground on the new project, which is expected to open in the summer of 2011.

Hey Man!
We've Got Groovy
Deals On New or
Used Wheels!

Up to a 1% APR*
discount for new and
used auto loans now
through May 28.



SPIRIT OF AMERICA
FEDERAL CREDIT UNION
325 N. 52 St.
Lincoln, NE 68505
467-1102



Proud to serve present and former Federal and Postal employees, Federally contracted employees, Military personnel and their families.

*See Credit Union for Details.

25,000 +
ATMS
Nationwide

3,700+
Credit Union
Shared
Branches
Nationwide

Edward Jones® Making Sense of Investing



Debra J. Zimmer, AAMS®
Financial Advisor
 3031 "O" Street, Suite 106
 Lincoln, NE 68510
Ph. 402-476-2266 • 800-497-4310
Fax 888-361-9101
 debra.zimmer@edwardjones.com
 www.edwardjones.com

History of Hawthorne

By Ed Zimmer

Part one in a three part series of articles on the history of Hawthorne School, the upcoming renovations, and the uses that will occupy the renovated building.

To begin our series, we'll go back to the late 1880s. Lincoln's population was booming, as the city grew from about 19,000 in 1880 to 55,000 in 1890. Each year of that decade Lincoln's public schools needed more space and schools were built throughout the community. In 1887 the Board of Education realized that eastward growth could not all be accommodated at East Lincoln School (30th and N Streets) and a one-room, wood-frame building was constructed east of Wyuka Cemetery. Early city directories called it "Jordan-Mixed School," apparently referring to the mix of ages in a single classroom. Miss Lillie Mortimer was the sole teacher in 1890. (The source of "Jordan" in the school's name remains a mystery.)

Jordan School was first located on O Street, probably at the southwest corner of 48th, but by the early 1890s had been relocated a few blocks north to the northwest corner of 46th and R—about where Kingery Construction's office and Sherwin Williams are today. That school operated until 1904.

A decade later, the school board again recognized the need for a school east of the cemetery. In May of 1913 a bid of \$8,450 was accepted and a four-room, wood-frame school was constructed for use that fall. It was located on the southwest corner of 48th and O Streets, about where PETCO stands (**Figure 1**) and was called Hawthorne School, in honor of American author Nathaniel Hawthorne (1804-1864). (Several of Lincoln's schools have been named for literary figures, including Irving, Whittier, Riley, and Kooser.)

The old Hawthorne School faced north towards O Street, which was a smoothly graded dirt street in our early view. According to the Lincoln newspaper, "This is a four room building of frame and stucco construction. Two of the rooms are now in use as class rooms. The other two are so constructed that they may be used as one large audience room for social or neighborhood gatherings. The attic is large enough to be equipped ultimately for manual



Figure 1—First Hawthorne School



Figure 2—1941 Aerial shows both Hawthorne Schools

training and domestic science departments." Dormers in the low, gable roof added light to the attic story. Ninety-three students were served by three teachers in 1914-15, under acting principal Mrs. A.E. McCrystal.

Hawthorne's quick construction was not typical compared to Lincoln High School and Bancroft Elementary, which set a new standard for Lincoln school construction when they opened in the mid-1910s. By 1924, the growing school population and recurring problems with fires, maintenance, lighting, and sanitation in the older schools led to a bond election campaign. Hawthorne's all-wooden construction placed it at the bottom of the District's ranking of facilities and at the top of the list for replacement, with the successful passage of a bond issue in November 1924. **Figure 2** shows the locations of the new Hawthorne School at the lower right, and the former school at top, center – just left of the tree-lined 48th Street. The wooden building was sold in 1929 to Lincoln Methodists and Hawthorne Methodist Church operated in the former school for a few years in the 1930s.

Hawthorne School (**Figure 3**) at 48th and L Streets met the new standards for fire-proof, reinforced concrete



**WOODS
BROS
REALTY**
SERVING NEBRASKA SINCE 1893



Marcia Murray ~ Realtor®
"A Lifetime of Caring"

Cellular: (402) 432-3989

Office: (402) 434-3800
email: marcia.murray@woodsbro.com
Fax: (402) 434-3801

Lincolnshire
7141 "A" Street
Lincoln, NE 68510



Figure 3—Early image of Hawthorne at 48th and L

construction, with brick and stone exterior. Lincoln architects Davis and Wilson designed the two-story, Colonial-Revival style structure, with a graceful curve emphasizing the central west entrance. The library and small gymnasium on the east side are especially handsome rooms, inside and out. Lower additions were completed in 1953 to the south (single story) and in 1955 to the north (two levels).

In the next edition of *The Buzz*, we'll look at the renovations planned for the 83-year old school, which should extend its service for many decades to come.

Litter Pick-up Planned For Saturday, May 8th

WE NEED YOU. The long winter has left debris along roads and in our parks. Please join us in cleaning up the neighborhood. The Witherbee Neighborhood Association is coordinating and leading a litter pickup from public areas, such as the right of way along public roads and alleys, Stuhr Park, Witherbee Park, and the grounds of Hawthorne Public School. We will also remove signs from light and utility poles. The area of the pickup is the entire Witherbee Neighborhood, 33rd to 56th Streets and O to Randolph Streets – or 11 miles of streets.

Come to Hawthorne School at 48th & M on May 8th anytime between 8 a.m. and noon to volunteer for this activity. Let us show Lincoln we care about our Neighborhood.

Volunteers of all ages from the neighborhood are asked to participate in this cleanup. We are asking individuals, youth groups, civic organizations, and schools to participate in this activity. Trash bags and safety vests are provided by a grant from the Great American Cleanup, and Keep Lincoln and Lancaster County Beautiful. Grants for this activity come from the Litter Reduction and Recycling Fund administered by the Nebraska Department of Environmental Quality. Trash in streets and parks encourages more trash, help us keep our neighborhood a clean and beautiful place to live. For questions or to volunteer contact Fred Freytag at fred@witherbeena.org or 430-6658.

New WNA Board Sets Priorities

New board members participated in an orientation January 30. Current and past board members provided a brief history of the Witherbee Neighborhood Association, and everyone discussed short- and long-term goals for the association. Some of the major accomplishments for the past year include:

- Filing for non-profit status which provides WNA with postage savings, and allows people to give tax-deductible donations to WNA
- Hosted LPS School Board meeting to provide input on the future use of Hawthorne School
- Participated in various community meetings and events to represent WNA
- Supported change of zoning request to allow the Ricketts House (33rd and L) to become a historic landmark
- Conducted Annual Clean-up, Woods Park tree mulching, and coordinated Neighborhood Garage Sales
- Hosted free Pool Party and Ice Cream Social at Woods Park
- Produced a quarterly newsletter to help keep WNA residents informed
- Hosted speakers on a variety of topics during monthly meetings

Some goals for the coming year:

- Secure non-profit status
- Continue popular programs such as the Clean-up, Woods Park mulching, Pool Party, Garage Sales, monthly speakers, and Newsletter
- Expand communication through the use of Facebook and monthly emails
- Work to reduce funding gap in the Witherbee Park master plan - \$5,500 is still needed
- Continue engagement with LPS and the new residents of Hawthorne School, continue monitoring City efforts on 48th and O redevelopment

Please contact a board member if you have an idea, question, concern, or would like to get involved in a WNA project. Everyone is welcome at the monthly meetings; membership is NOT required – so please join us!

Your **Witherbee Neighborhood** styling/barber salon at
42nd & O—for the past 23 years
Monday-Saturday—early and late—walk-in or appointments



120 South 42nd
488-8253

Wigs and hairpieces—sales and service
Specialist in alopecia and chemotherapy related hair loss
Manicure, pedicure, color, perm, cut and styling with
9 experienced barber/stylists

WNA Calendar

(Please note that membership is Not required to attend WNA meetings.)

Additional meeting information may be found at Witherbeena.org

Saturday, May 1st – Special Olympics National Games volunteer registration deadline. www.2010specialolympics.org

Thursday, May 6th – WNA monthly meeting- Topics: Witherbee Park; County Attorney candidate Rick Boucher

Saturday, May 8th – Neighborhood Cleanup & Bakesale. 48th & M. 8 a.m. – noon. Household rubbish collection, personal documents shredding.

Saturday, May 8th – Bakesale - fundraiser for Witherbee Park improvements. For information, see article inside.

Tuesday, May 11th – Election Day

Monday, May 17th – Lincoln Neighborhood Alliance, 7 p.m. Tabitha LifeQuest Center conference room, 48th & J St.

Thursday, May 20th – City Councilman Doug Emery's Citizen information meeting 5:30 to 6:30 p.m. at the Victor E. Anderson Branch Library, 3635 Touzalin Avenue.

Saturday, May 22nd – Household Hazardous Waste collection. 601 West Cornhusker Highway, Pfizer Inc, 9 a.m. – 1 p.m. www.lincoln.ne.gov/city/health/envIRON/pollu/waste/pdf/wstcolec.pdf

Saturday, May 22nd – Latex Paint Exchange. EcoStores Nebraska, 530 West P Street, 9 a.m.–2 p.m.

Thursday, June 3rd – WNA monthly meeting- Topic: Diagnosing Summer Lawn Problems, Roch Gaussoin, UNL Professor, Extension Turfgrass Specialist + Weed Science, Panelist of Nebraska Educational Television's "Backyard Farmer" www.agronomy.unl.edu/newfacultystaff/directory/gaussoin.html

Thursday-Saturday, June 10-12 – WNA Neighborhood Garage Sales, For more info contact garagesales@witherbeena.org or Nancy Holman H:488-6847.

Monday, June 21st–LNA, 7 p.m., Tabitha LifeQuest

Thursday, June 17th – City Councilman Doug Emery's Citizen information meeting 5:30 to 6:30 p.m. at the Victor E. Anderson Branch Library, 3635 Touzalin Avenue.

Thursday, July 1st – WNA monthly meeting – Topic: Veterans Garden at Antelope Park and Flag Care, Dean Clawson, Former Lincoln High Teacher

Thursday, July 15th – City Councilman Doug Emery's Citizen information meeting 5:30 to 6:30 p.m. at the Victor E. Anderson Branch Library, 3635 Touzalin Avenue.

July 17 - 24 – Special Olympics National Games.

Sunday, July 25th – Neighborhood Ice Cream Social & Free Swim, southeast corner Woods Park, 33rd & J. Swim in the Woods park pool 6-7:30 p.m. Ice Cream Social. Sidewalk chalk art contest. To volunteer contact event chair Bo Dowling bodow57@yahoo.com, 499-2533

Midtown Lincoln
5010 "O" STREET
Hy-Vee Pharmacy
402.465.0413
8 a.m. to 10 p.m. M-F
9 a.m. to 6 p.m. Sat
10 a.m. to 6 p.m. Sun
• Drive Thru
• Free Delivery
• Flu Vaccinations
\$4 OR \$10
30-day 90-day
Convenience, Care and Counseling.
Ask your Lincoln Hy-Vee pharmacist or your physician if your medication is available in generic form. Go to hy-veepharmacy.com for a complete list. Some restrictions may apply. Not applicable with all insurance plans.
Transferring prescriptions has never been so easy. Just visit or call your Lincoln Hy-Vee Pharmacy and we will do all the work!
Hy-Vee Pharmacy