

## Ninth Annual WNA Cleanup May 12th

Join us Saturday morning May 12th from 8:00 a.m. to 12:00 p.m. at Bryan Community School (formerly Hawthorne School). Bring your unwanted items to be donated, recycled, or disposed of. Benefits for paid WNA members continue this year. *(We will waive the usual fee for tire and Freon appliance collection for current members only.)*

Rid your home, garage, yard, attic, closets and basement of unwanted items for FREE. We will recycle anything we can. (No Hazardous Materials or general household trash). We need YOU, our friends and neighbors. Bring



the whole family to volunteer. Coffee and refreshments will be provided to volunteers starting at 7:30 AM. Available jobs: Greeter, Volunteer sign-in, photographer, direct traffic, unload, sort, and organize items, collect recycling fees,

issue brush coupons, refreshment station, deliver tires to recycling site, membership recruiting and signup. We also need volunteers with pickup trucks and/or trailers to help those who cannot bring their refuse to us.

All cleanup volunteers should report to the north parking lot of Bryan Community School starting at 7:30 a.m. Please bring your own work gloves. If you can help us with this year's clean-up please contact us in advance so we can assign volunteers to specific jobs. Call or email volunteer coordinator Mike Kreikemeier. Email: mbk@windstream.net or phone 402-477-9194.

Residential document shredding. 8 a.m. to 10 a.m. only. Shredding Solutions will provide FREE document shredding to all for up to 50lbs and \$0.13/lb over that. This is a very inexpensive way to rid your home of unwanted confidential data. Regular minimum cost is \$25 for up to 75 lbs. Bring items like tax records, financial records, payroll records, personnel files, legal documents, cancelled checks account records/ledgers, computer printouts, medical records, old credit and ID cards, cassette tapes and CDs. Please check with your accountant or tax advisor how

**Continued on page 11**



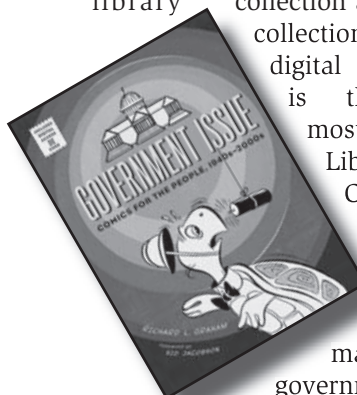
## Comic Book Collection and History Is Topic Of WNA Meeting May 3rd

"Your mom reads Army comic books!" Ultimate friendly insult or strange but true government publishing endeavor? Attend the May 3rd Witherbee Neighborhood meeting and find out how the world of comic books is much more than Spider-Man and Archie hanging out with the gang. Richard Graham, associate professor at the University of Nebraska-Lincoln will give a presentation on his research into government comics. Prof Graham has created a digital collection from the hundreds of comics in UNL's library collection and his own



Richard Graham

collection. The comic digital archive is the second most viewed digital collection of UNL Libraries, exceeded only by the Willa Cather image collection. Professor Graham will share highlights from the collection and talk about how this form of pop culture publishing has been used by many branches of the United States government.



## About Your Witherbee Neighborhood Association

### Boundaries:

33rd to 56th &

'O' to Randolph Streets

### Meetings:

7:00 p.m. first Thursday of each  
month at Tabitha Lifequest Center,  
48th and J.

[www.facebook.com/witherbeena](http://www.facebook.com/witherbeena)

[www.WitherbeeNA.org](http://www.WitherbeeNA.org)

---

### Executive Board:

Fred Freytag, President  
402-430-6658  
[fred@WitherbeeNA.org](mailto:fred@WitherbeeNA.org)

Mike Kreikemeier, Vice President  
402-477-9194  
[mbk@windstream.net](mailto:mbk@windstream.net)

Jackie Varicak, Secretary  
402-438-3616  
[wvaricak@neb.rr.com](mailto:wvaricak@neb.rr.com)

Karen Vogeley, Treasurer  
402-435-6022,  
[treasurer@witherbeena.org](mailto:treasurer@witherbeena.org)

Rick Bagby, Past-President  
402-488-8567  
[witherbeerick@gmail.com](mailto:witherbeerick@gmail.com)

---

### Additional Board Members:

Bryan Hurst 402-441-6712  
[Bbacon.hurst@gmail.com](mailto:Bbacon.hurst@gmail.com)

Tony Marquez 402-435-3009  
[netonym@windstream.net](mailto:netonym@windstream.net)  
[tmarquez@tmcoinc.com](mailto:tmarquez@tmcoinc.com)

Kathy Stastny 402-488-3314  
[kstastny@neb.rr.com](mailto:kstastny@neb.rr.com)

Jeff Worrall 402-601-5269  
[jworrall05@gmail.com](mailto:jworrall05@gmail.com)

---

Newsletter Committee Chair  
Jackie Varicak 402-438-3616  
[wvaricak@neb.rr.com](mailto:wvaricak@neb.rr.com)

Newsletter Advertising:  
Jeff Worrall 402-601-5269  
[jworrall05@gmail.com](mailto:jworrall05@gmail.com)

Web Development:  
Fred Freytag 402-430-6658  
[fred@WitherbeeNA.org](mailto:fred@WitherbeeNA.org)

## Witherbee Connect Helping Neighbors Have A Small Town Feel

By Kathy Stastny

Living in Witherbee neighborhood has many advantages: easy access to the fire department, police department, takeout food, aging care, grocery stores, clean air, and, for the most part, great neighbors.

Knowing our neighbors is key to having a strong sense of safety and well being. Being friendly with neighbors can go a long way from borrowing that cup of sugar to asking for help in a crisis. This is my motivation for the Witherbee Connect project.

My first years were in a smaller town. We seemed to know everybody and families helped each other out as a way of life. There was a safety net of people we could always rely on. In our Witherbee neighborhood I want that same sense of community where we know most of the kids up and down the street and we watch out for them and each other.

Witherbee Connect is meant to give us that small town feel even while living in the heart of a city. Needs are very diverse in our city and with this program people can have easier access to resources that can help them have the strong sense of safety and well being they need to thrive.

Bryan at Hawthorne is the high school that is in the center of our neighborhood that has reached out to us. They want to help us with their knowledge and manpower. The students already have a good start by pitching in and cleaning up tree damage from a recent storm. They can look at what needs to be done and tell you what they can do. This spring they are eager to help those in need to work on a garden, rake leaves or move rocks. These students would love to be outside helping you rather than being in a classroom talking about public service. We have a great opportunity to give them the feel of a small town by welcoming them as they seek to serve.

I encourage neighbors helping neighbors. Most of us can use a helping hand once in a while. That cup of sugar, loan of a tool, light bulb replacement, care for a child in an emergency, or ride to the Doctor's office can make a big difference. I encourage folks to ask for help and also watch for ways to help their neighbors.

I have read that people live longer and have a better quality of life according to their zip code. I want 68510 to be one of those zip code areas that helps you and I live healthier, longer and happier. With so many amenities nearby including Tabitha for the elderly, several churches for support, schools to educate the young, stores within walking distance, and parks close by to play, socialize, or just sit in, we seem to have it all. But it's the people and the relationships that make all those amenities beneficial so please consider asking for help or be the one to help someone close by. If you can't seem to find a neighbor when you need help or if you can't help a neighbor in need call Witherbee Connect at 402-488-3314 and we'll do our best to give you a small town feel.



Kathy Stastny

Your Witherbee Neighborhood

*Piano and Voice Lessons*



**Lynette Zimmer**  
402-309-6232

Conveniently located near  
36th and J.

## Second Rehab Gym Opened at Tabitha

By Erica Balm

Tabitha Health Care Services is now helping more clients come back from injury and illness with the completion of its newest building renovation, Club 4 Fitness & Rehabilitation Gym. As the organization's second therapy gym, the opening celebrates Tabitha's expertise and commitment to inpatient and outpatient elder rehabilitation programs.

"We are so excited about the opportunity to provide additional rehabilitation services to elders in these beautiful gyms," said Samantha Hoffman, Tabitha's director of rehabilitation services.

The new gym, located in Lincoln at Tabitha's LifeQuest Rehabilitation Center, was intentionally designed. Patients walk in to a large, multi-functional space surrounded by a walking track. Encircled within the track are designated areas for individualized patient care, featuring balance, low-impact and traditional workout equipment. The area is bright—naturally lit with a wall of windows that look out on Tabitha's growing campus and the surrounding, central-Lincoln neighborhoods.

"The bright, sunny spaces in both gyms are energizing, uplifting and encouraging both for our patients and for our staff," Hoffman said.

The new space is shared by Tabitha's rehabilitation clients and the organization's employees. As a benefit and part of Tabitha's workplace wellness program, employees can use the walking track and traditional workout equipment 24 hours per day.

The new Club 4 partners with LifeQuest Rehabilitation Gym, located on Tabitha's first floor, to offer physical, occupational, speech and aquatic therapies to Elders who need rehabilitation due to surgery, injury or other disabling conditions. Many services are offered up to seven days per week.

Hoffman said the primary goal of Tabitha's rehabilitation programs is to return clients back to a level of function equal to or better than before surgery or injury. For many clients, this means renewing mobility in their homes, performing basic self care activities such as dressing, and improving speech and swallowing.

Hoffman said the defining factor in Tabitha's rehabilitation programs is its elder focus. Tabitha therapy teams have the experience and expertise to design effective rehabilitation plans for individuals ages 60 and above.

Club 4 Fitness & Rehabilitation Gym is adjacent to a new inpatient, skilled nursing rehabilitation neighborhood on LifeQuest's fourth floor. Each of the neighborhood's 18 renovated, private suites is outfitted with modern furnishings and attached, private bathrooms. With the renovations, Tabitha has converted all of its short-stay rehabilitations rooms to private occupancy.

To learn more about Tabitha's compassionate rehabilitation services, visit [www.Tabitha.org](http://www.Tabitha.org).



### Dinner for Two

## \$8.99

- 1 Original Runza® Sandwich
- 1 1/4 lb. Hamburger
- 1 Medium Order of Fries
- 1 Medium Order of Onion Rings
- 2 Medium Drinks


Good at the 48th & O Street Runza® location only. Not good with any other offer or discount. Substitutions extra. One coupon per person or car per visit. **Coupon expires 6/30/12.**

Runza® is a registered trademark of Runza® National, Inc.

**Breakfast**




**Lunch**

**Dinner**




Witherbee

## \$2.49 for a bagel with cream cheese & a small coffee

Good at the 48th & O location only. Additions & substitutions extra. Expires 6/30/12.



*As your Witherbee Neighbor,  
I can offer you a free, no  
obligation, market analysis.*

**Scott Anderson, Realtor®**  
**402-217-1975**  
[scott.anderson@woodsbrothers.com](mailto:scott.anderson@woodsbrothers.com)  
[www.scottanderson.woodsbrothers.com](http://www.scottanderson.woodsbrothers.com)



Real Estate • Mortgage • Title • Insurance

## Down Under Pottery

Studio & Gallery

33rd & Randolph  
**402-477-7655**  
 Call: Kathleen Grossman

**Gallery Open Daily**  
 Please call ahead

**8-week Session**  
**Classes Available –**  
**\$150**  
 on Tuesday &  
 Wednesday nights or  
 Saturday mornings

**[www.downunderpottery.com](http://www.downunderpottery.com)**





Liam Kreikemeier and friend Eric Varicak enjoy the ample walkways and wildlife at Wyuka.

## Wyuka to be Topic of June Meeting

Attend the Witherbee Neighborhood Association general meeting on June 7th and learn about the history and restoration projects of Wyuka Cemetery. Diane Bartels from the Wyuka Historical Foundation will present information about the historic elements of the cemetery that was created in 1869 by the new state of Nebraska. Learn about the restoration project to level and reset the stone markers in G.A.R. Circle, the site of the annual Memorial Day Commemoration. This will be a very informative talk about this historic park like cemetery in the middle of the city.

## Credit Reports is WNA July Topic

The July 5th WNA meeting will feature employees from MembersOwn Credit Union. The topic will be credit reports and how they are an important part of your financial health along with what makes credit unions unique in the financial services industry. Learn about the difference between credit reports and credit scores along with how to obtain your credit reports and how it affects financial services that you use. MembersOwn Credit Union is a new business in the neighborhood opening their new office at 33rd & A Street. Come to the July meeting and welcome them to the neighborhood.



**AMERICAN FAMILY  
INSURANCE**

[lindematthiesenagency.com](http://lindematthiesenagency.com)

**Linde Matthiesen Agency**

402-489-7799

[lmatthie@amfam.com](mailto:lmatthie@amfam.com)

Cherry Hill Building  
245 S. 84th St. Ste 110  
Lincoln, NE 68510



*Let Our Team  
"Protect Your Dreams"*

## Witherbee Park Blooms Brightly this Spring!

A Message from WNA President Fred Freytag

A big thank you goes out to the Parks Foundation for the grant that paid for some of the bulbs planted last fall. The tulips and daffodils could be seen in full bloom this spring. The park was chosen as Yard of the Month for the interest it draws to all those who drive along O Street. All of our volunteers who helped plant the bulbs deserve this recognition for helping beautify our neighborhood and City. Watch for a new piece of art to be installed in the park along with a picnic table. A grande opening will be planned to celebrate the park.

Another thank you goes out to all of you who renewed your membership to the WNA, and welcome to all of you new members. I encourage those of you who are not members at this time to consider contributing to our association by joining. Payments can be made online.

Leaving behind a neighborhood that is as good as or better than it is now for future generations is a task of the Witherbee Neighborhood Association. With this in mind we have begun another recognition program to promote investment in our area by spotlighting home improvements made by residents. See pages 6-7.

Activities coming up this year include: neighborhood clean up, the ice cream social and free swim at Woods Park, Streets Alive, fall garage sales and more. Contact any board member if you would like to participate in or help with any of these activities. I hope to see you there!



**RECYCLELINK** makes

recycling easy and rewarding!

**Attached Lid**

Keeps your recyclables in the cart for cleaner neighborhoods.

**RFID Chip**

Tracks the weight of your recyclables earning Reward Points.

**One Big Cart**

Easily fits all of your recyclables.

**RecycleBank**

Means you are earning rewards for recycling.



**Wheels**

Easily roll your recyclables to the curb each week.

Start RecycleLink today and get

**1 Month FREE**

**Use Promo Code WB1MF**

[www.RecycleLink.net](http://www.RecycleLink.net) **464-0003**

Offer valid to new customers only and ends July 31, 2012

## A Place to Go for Domestic Abuse Victims

By Kathy Stastny

Much to my surprise I found myself presenting the program for the January 5th Witherbee Neighborhood Association meeting by stepping into Sue Anderson's shoes. Sue is the Community Education Coordinator for Voices of Hope and was unable to be at the meeting that evening. I have been connected with Voices of Hope since 1990, completing a practicum and then after retiring from UNL in 2005 returned to working 15 hours a week for Voices of Hope.

Due to my concerns for people experiencing abuse I was most willing to talk about available help in our community. The important message I want to convey was that victims are not alone. Voices of Hope are there for both men and women dealing with domestic violence, sexual assault, incest, stalking and other abuse. I remember when there was no place for people to go for help other than a friend or family member. Sometimes these folks were helpful and sometimes not. Also our family and friends often live a great distance away.

Voices of Hope is there to help with counseling, both walk in and individual with the same counselor. There is a 24 hour crisis line that can be called anytime day or night as well as 24 hour on call advocates. Voices offers healing groups and education groups. They can help with protection orders, changing locks, basic needs, safety plans, and many other very special needs, even helping with pets.

Voices of Hope is a non-profit and is grateful for grants and donations. Last year that money helped to serve 116 hospital calls, 687 walk-ins, 350 basic needs given out, served 800 children, 281 group members and 12,000 client calls. I strongly encourage anyone that is experiencing or think they may be experiencing abuse to pick up the phone and call 402-476-2110 or the crisis line 402-475-7273. The agency is located at 2545 N street in a wonderful big old house, staffed with knowledgeable and caring counselors. Each person using these services has unique concerns and problems so there is no one answer fits all. Staff members are there to help sort out the problems and find the best answers. I appreciate being able to pass this information on with hopes it is helpful to my Witherbee neighbors for themselves or someone they know.



## Thearapist administers treatment in remodeled room. Remodel is in the air at The Ambassador

By Brandy Johnson

The Ambassador Health System building at 4405 Normal Boulevard has been a proud Witherbee neighbor since 1966 and has undergone many changes over the years. Recently, The Ambassador completed an extensive remodel featuring new dining rooms, a new therapy gym and spacious private suites to accommodate transitional rehabilitation patients.

In addition to Extended Care and Advance Pulmonary Specialty Care, The Ambassador Lincoln specializes in transitional rehabilitation. We are your neighborhood hospital to home transition specialists! Whether it's a broken bone or an infection, our skilled physical, occupational, speech and respiratory therapists will help you get back home as soon as possible. For more information, stop by for a tour, call 402-448-2355 or visit us on the web at [www.ambhealthsys.com](http://www.ambhealthsys.com).



*Your Neighborhood*  
**Hospital-to-Home  
Transition  
Specialists**

Do not let a surgery, illness, or injury keep you from living your life. Our dedicated team of physical, occupational, respiratory, and speech therapists will work to get you back to living your life, as you do it best.

Visit **AmbHealthSys.com** or call  
**402.488.2355** to experience  
*The Art of Caring* today.

**THE AMBASSADOR**  
HEALTH SYSTEM | LINCOLN

Call for Our  
Affordable  
Prices

Your Witherbee Neighborhood

**All Breed**

**Dog and Cat Grooming**

**402-488-0299**

**SALON**  **K9**

**120 South 52nd St.**



# Neighborhood Home Improvements To Be Highlighted

## Stauffers Staying

By Mike Fitzgerald

The two-story addition that Ed and Jan Stauffer put on their home includes a 19' x 19' den with fireplace and custom made bookshelves on the first floor, and a sewing room of the same size on the second floor. Before elaborating about these, let's start with a bit of background. The home is located on the southwest corner of 40th & H and was built in 1925 in Doane's Acre subdivision by the same builder of the house across the street to the north (637 S. 40th) and east across the street (640 S. 40th). Ed and Jan have been married 41 years and purchased their home in November 1980. Mortgage interest rates then were at 12.85 percent. But that was a bargain compared to the 15.57 percent available when rates peaked in June 1982.

The Stauffers are professors at UNL in the theatre department, Ed is the technical director at the Johnny Carson School and Jan is a costume designer. They first contemplated an addition in 1998 and attended a home remodeling tour that year and picked a contractor whose work they liked. They overhauled the kitchen in 2003 and the upstairs bathroom in 2007. Ed had done a lot of home repair and remodeling work during their first 30 years. In that time he became more interested in working on the



**Before Improvement at 40th and H Street**

yard and garden. They received WNA's Yard of the Month award in April 2007. The Stauffers considered moving to a larger house but quickly decided they wanted to stay in this neighborhood. Ed's previous extensive labor on the house was a factor in their decision to let professionals tackle the home addition project. At first they had a one-story addition in mind. But both being designers, they wanted any addition to be integrated into the design of the original house. So, they opted for adding a second floor as well that would enable them to maintain the roofline of the house and allow Jan to move her costume sewing from the master bedroom.

Where can you  
turn when you  
have

*questions*  
about Elder  
care?



**TABITHA**

*Your answer for Elder Care*

402.486.8520 | WWW.TABITHA.ORG

**Strong Community Foundation**  
*Integrity, Strength, Trust*

Deposits Mortgage Lending Commercial Lending Cash Management

Since 1968, West Gate Bank has provided a strong foundation for our customers to achieve their dreams.

Experience the West Gate Bank difference. Our local ownership, commitment to community reinvestment and outstanding customer service truly sets us apart.

Visit our Midtown Branch at 4955 O Street or call 402-434-3452.



Lincoln's Bank | westgatebank.com



member FDIC

# Highlighted By New *Buzz* Column



## After Improvement at 40th and H Street

Both being college professors means they have a lot of books, so the custom made bookshelves is a major feature in the den. Another feature on the first floor is the stained glass kitchen window which separates the kitchen and the den. The window which Ed made years ago complements both the kitchen and the new den. Also, the south side of the den includes glass doors which allows for sunlight in the winter. Ed has a potted tree he has nurtured for 41 years that he brings inside each fall. The doors on the south side of the den make this a much easier task and the tree enjoys the sunlight.

The house has a fireplace and chimney in the front living room. By using a gas fireplace in the new den, Ed and Jan were able to avoid the cost of building a second chimney.

The sewing room includes closets and cabinets – room for storage that many houses built up until the late 1940s lacked. With sewing supplies and equipment moved to the upstairs addition, they plan on making the master bedroom into a guest room.

The Stauffers say that contractors made the process manageable by creating computer generated drawings and illustrations and estimating the cost by room and phase. Contractors knowing all the city requirements and codes for plumbing, wiring and heating was a welcomed benefit of having professionals do the work.

Contractors broke ground in May 2010 and they were essentially done by October, which included a 3-week delay in foundation work due to rains in May and June

## Edward Jones® Making Sense of Investing



### Debra J. Zimmer, AAMS® Financial Advisor

3031 "O" Street, Suite 106  
Lincoln, NE 68510

Ph. 402-476-2266 • 800-497-4310  
Fax 888-361-9101

debra.zimmer@edwardjones.com  
www.edwardjones.com

that year. Also, Jan recalls, soon after the foundation was in place the contractors punched a hole in the west wall - on all three levels of the original house during the same week. But having endured the six-week remodeling of their kitchen a few years earlier helped prepared them for the construction activity.

Finally, a it's-a-small-world note about their project is that one of their first college students grew up in the house before the Stauffers purchased it. When Ed and Jan held an open house in the fall of 2010 to celebrate the completion of the project, that student's youngest sister who lives in Lincoln brought her children to tour the house.

## Wanted: Your Suggestions

This issue of the Buzz newsletter begins a new feature in which we will spotlight home improvements made in the Witherbee neighborhood. The articles will recognize the investment and creativity homeowners have made in the neighborhood and give others ideas they can consider adopting or adapting. If you have made an improvement or know someone who has, please contact WNA Buzz editor Jackie Varicak at (402) 438-3616 or email [wvaricak@neb.rr.com](mailto:wvaricak@neb.rr.com)



## Your Witherbee Family Restaurant

### Coupon

# \$5.00 OFF

Two adult entrees with two beverages.

Redeemable at 48th and O only

Limit one coupon per meal — Expires August 1, 2012

Prompt  
Courteous



Friendly  
Service

121 No. 48th  
Lincoln, NE 68594

402-467-2674

Free Wireless Internet

OPEN  
Mon. - Sun.

# Witherbee Connect: Connecting You to

One of the purposes of Witherbee Connect is to help you find services within your neighborhood, or as nearby as possible.

Pre-School services are available right in your own neighborhood with several choices available. If you are a parent of a pre-school aged child wanting to send your child to school in the 2012/13 school year there is still time left to get him or her registered. The following are some options right here in our boundaries or just blocks away:

## Careday Quest Child Care & Preschool 3633 O St.

- Mission: Family oriented and on the team of parents by escorting their child's day and its environment, striving to teach character, family values, excitement towards learning and getting along with others! They hope to house the beginning of each child's potential, and nurture it throughout their day. They provide a safe place to grow and encourage them to boldly carry compassion and care for those around them!
- This is a year round daycare with a pre-school focus during the school year.
- Child to adult ratio: Adhere to Nebraska state ratios and usually over-staffed. Licensed for 59 children.
- Days and times open: M-F from 6:30am to 5:30pm except for infants which is 7:00am to 5:30pm. Preschool's focus is 8:30am to 11:30am, with a continued & coordinated plan into the afternoon. Pre-school attendance only, is offered but according to available openings. They offer a long established yet flexible-to-needs, 'multi-intelligence' preschool curriculum
- Cost: Current fees range from \$125.00 per week to \$145.00 per week with a \$35.00 enrollment fee. Title 20 families welcome.
- Age: Overall they accept ages 6 weeks thru pre-kindergarden, and continue to care for school agers (who are siblings of a pre-K-er), on non school days and weeks.

For more information call Executive Director Connie Bliss at 402-476-0433 or 402-525-4199.

## Redeemer Lutheran Church and Pre-School 510 S 33rd St.

- Mission Statement: Reaching Children through the power of God's love by providing children with a Christ centered, child focused educational experience.
- First Day of School: August 22nd, 2012. They take children year around until they are full.
- Child to adult ratio: 10 to 1. Class capacity-20
- Days and times open: T/Th, M/W/F or M-F from 8:30am to 11:30am each day.
- New this coming year: T/Th, 12:30pm-3:30pm Afternoon Specialty Class
- Costs: registration fee \$50.00, T/Th Class-\$90.00/month M/W/F Class \$115.00/month, and M-F Class-\$160.00/month, T/Th Afternoon Specialty Class \$80.00 per month.
- Age: 3-5, must be three on the first day of class.

For more information contact Director Lindsay Hute at 402-540-7958

WNA wishes to thank Tabitha  
for being a great neighbor and providing  
meeting space for us each month.

Conveniently located for  
Witherbee residents  
**CAREDAY QUEST**  
Child Care & Preschool Program  
(6 weeks — 12 years)

*We offer a bright,  
clean, cheerful,  
comfortable,  
welcoming, safe,  
environment.*

Title 20 Welcome.



- Wholesome Meals; Breakfast, Lunch, Snack
- Preschool Curriculum to Inspire Young Minds
- Toys & More Toys!
- Facilities Sanitized Daily

Reading Times, Arts & Crafts, Science Projects, Building, Costumes, Play House, Singing, Parades, Nature Walks, Holiday Events, Park Trips, Fun Theme Days, Monthly Daisy Doe Clown Visits, Santa at Christmas...

**Enroll Now!**

**402-476-0433**

**CAREDAY  
QUEST**

**3633 "O" Street (37th & "O")**



### A STREET MARKET

We are a full service grocery store, providing Fresh Cut Meats and Produce! We pride ourselves on our customer service, and we also Deliver.

Our Sale Ad starts on Wednesdays, and can be found in Local Values section of Journal Star.

### Your Neighborhood Store Located at 33rd & A Street

We are open 7 days a week, our hours are:

#### Sunday

8 a.m. - 10 p.m.

#### Monday - Saturday

7 a.m. - 10 p.m.

We accept Visa, MC, Discover, and EBT.

**402-477-3633**



# Your Neighborhood Pre-Schools

## St. Teresa's Pre-School, 616 S 36th St.

- This is a Faith based pre-school to help children transition into school.
- Child to adult ratio: 11 to 1. Class capacity 11.
- Days and times open: M/W/F morning class goes from 8:15am-10:45am and the M/W/F afternoon class goes from 12:45pm-3:15pm.
- Cost: \$45.00/month
- Age: 4-5 year olds. Must be 4 by July 31st.

For more information call Principal Sister Mary Cecilia at 402-477-3358.

## Merry Manor South God's Awesome Children 301 So 48th St.

- Mission: Provide the highest quality care possible at a reasonable cost to families. Safe secure environment which promotes social, emotional, physical and intellectual development with strong link to family.
- Year round care M-F 5:30am-6:00pm. Preschool is offered 9:00am-11:15am. A child can come just for pre-school 1-5 days a week.
- Child to adult ratio: 6 weeks to 18 months 1 to 4, 18mo-3 years 1 to 6, 3 year old 1 to 10, 4 & 5 year olds 1 to 12.
- Cost: Full time depending on age ranges from \$152.00-\$168.00 per week. Hourly-\$7.50 per hour. Yearly enrollment fee applies.

For more information contact President/Administrator Tina L. Wright at 402-466-2215

The above are just a few with details which were gathered by a questionnaire or phone call, but our neighborhood also offers the following with additional details for them being just a phone call away:

**Christ United Methodist at 4530 A St. offers a Day Out Program. They can be reached at 402-489-9618**

**Temple Tots Preschool at 4940 Randolph can be reached at 402-488-1167**

**Montessori School for Young Children at 4727 A Street can be reached at (402) 489-4366.**

**FSCC Eastridge School at 6245 L St. can be reached at 402-441-7949.**

**FSCC Randolph School at 1024 So 37th St. can be reached at 402-441-7949**

For additional child care opportunities, including in home care, in our area call Witherbee Connect at 402-488-3314 or Child Care Connection at 402-441-8033.

**Important Note: The Witherbee Neighborhood Association and Witherbee Connect do not endorse any of the pre-schools or daycares listed above, nor do they provide references for them. It is recommended that you do the necessary research to assure you are choosing the best pre-school or care for your child. The service of providing you a list is to simply aide you in finding these types of services right here in your neighborhood.**



**WOODS  
BROS  
REALTY**

SERVING NEBRASKA SINCE 1889

**Marcia Murray ~ Realtor®**

*"A Lifetime of Caring"*

Cellular: (402) 432-3989  
Office: (402) 434-3800  
Fax: (402) 434-3801  
email: [marcia.murray@woodsbros.com](mailto:marcia.murray@woodsbros.com)  
Website: [www.MarciaCares.com](http://www.MarciaCares.com)



Lincolnshire  
7141 "A" Street  
Lincoln, NE 68510

## SUPER SAVER

### 48th & O St.

Love Coupons? visit [www.Super-Saver.com](http://www.Super-Saver.com)  
for Great Savings with Web Coupons

## Snip & Super Save!



Always Save  
**PLU 699**

Always Save  
**Ice Cream 1/2 gal.**

# FREE

with additional \$10 purchase

**Good at 48th & O location Only**

Limit one per coupon per person — Expires July 31, 2012

**Store Phone**  
402-464-8552

**Pharmacy Direct Line**  
402-464-8822

## We Sell For LESS!

Good at 48th & O location Only

## Woods Tennis Court Update:

By Bryan Hurst

Plans are in the works to replace the 2 tennis court bubbles with a permanent structure according to Kevin Heim, manager of Woods Tennis Center. Kevin presented at the WNA membership meeting in February. As manager since 2009, he has built programming and staff and helped establish "Friends of Woods Tennis", a nonprofit organization that became the operator last year after city council approval. The bubbles were erected in 1984 as temporary structures with money from a group of investors; the thought then was that they would eventually be replaced with permanent facilities. Kevin said the heating and cooling bills sometimes reach \$15,000.00/ month and a permanent building may reduce these costs by as much as half without raising fees.

Tennis is no longer only considered a country club sport according to Kevin. The summer program for kids has grown from 37 kids in 07 to over 1000 in 2011 and free court time and racquets are available to neighbors of Woods when outdoor courts are available. Friends of Woods Tennis has fund raising events like the "Turkey Tourney" which has raised over \$40,000.00 in the past 3 years. Groups from all over the state use Wood's facilities and over 2500 racquets have been given out to lower income and minority kids.

During the presentation, Kevin showed an aerial view of the proposed changes. The current plan is for 10 indoor courts and 9 outdoor courts staying to the south of the sidewalk currently bordering the north side of the bubbles. The ceiling must be at least 44ft high for competitive tennis. This would be comparable to the current height of the bubbles. Friends of Woods has partnered with the Lincoln Parks Foundation and selected a person to do a feasibility study.

Kevin said they are currently meeting with Neighborhood associations to get feedback on the design proposal created after meeting with the associations last year. Once the feasibility study is complete in April, Kevin will share a time line of meetings including a neighborhood/ community meeting, Parks and Recreation Advisory Board, and city council. Depending on the outcome of the feasibility study, these meetings should take place sometime between April and June. For further questions contact Kevin Heim at woodsheadpro@windstream .net or 402 617 6992.



With CERT training, these Witherbee residents will help make our neighborhood safer during an emergency situation. Left to right, front row; Christine Nesmith, Debbie Petschke; back row; Mike Kreikemeier, Brandon Brown, Jim Bare, and Larry Frisch.

## Witherbee Residents Get CERT Training

Six people from the Witherbee neighborhood spent a very cold weekend in February learning how to be better first responders in emergency situations. The Community Emergency Response Team (CERT) training was held on February 10-12, 2012 at the SCC Lincoln campus. Over 28 people attended the class. Three instructors provided practical information on organizing a neighborhood group to respond to emergencies such as severe weather, house fires and motor vehicle accidents. The class consisted of presentations, group discussions, hands on training and practice. The weekend training culminated with a mock disaster where everyone in the group worked together to rescue volunteer victims.

Serving Federal, Military  
and Postal Employees  
through the decades

1932  
1942  
1952  
1962  
1972  
1982  
1992  
2002  
2012

# 80 Years of Service

Eligible for membership or already  
a member? Attend our  
**2012 ANNUAL MEETING**  
Tuesday, April 24  
Hillcrest Country Club - 9401 "O" Street

**SPIRIT OF AMERICA**  
FEDERAL CREDIT UNION  
325 N 52 St  
Lincoln NE 68504  
402-467-1102  
www.spiritofamericafcu.org

Credit Unions are democratically controlled financial co-operatives focusing on service before profits.

Give us a call or check out our website to find out more!

**PEOPLES**  
*Choice*  
Federal Credit Union

Free Checking • Visa® Debit Cards • Online Account Access  
Bill Pay • Competitive Loan Rates • Share Certificates

**NCUA**

2500 "N" Street  
Lincoln, NE 68510  
402-475-7059

6700 S. 70<sup>th</sup> Street  
Lincoln, NE 68516

# Ninth WNA Cleanup May 12th Continued from Page 1

long documents need to be kept. Staples do not need to be removed.

Carter Refuse and Niederhaus Refuse will pick up garbage in the WNA area on Saturday morning. This is an excellent time to get rid of refuse that doesn't make it into your normal garbage pickup. Have trash receptacles on your curb by 6:00 am.

Bring your items to us, or call to request help for things you cannot haul. We will have volunteers with pickups and trailers. If you need help hauling items to the roll-off site call Mike Kreikemeier at 402-477-9194.

Waste items accepted for FREE: Furniture, lumber, screens, windows, doors, grills, junk, landscape timbers, picnic tables, swing sets, clothesline poles, broken fences, construction rubble, carpet, and non-Freon appliance (stoves, washers, dryers, and hot water heaters) computer CPUs; mouse/keyboards.

Items accepted for a nominal fee: (**FREE to paid WNA members**) Appliances with Freon (refrigerators, freezers, dehumidifiers, and air conditioners), \$10 each. Car/pickup truck tires \$3 each; large pickup truck tires \$5 each; farm tractor tires \$10 each. Tires with rims add \$1 each.

Goodwill will again be collecting electronics and household items at this event.

Recyclable items accepted for EcoStores Nebraska: EcoStores Nebraska accepts donations of quality reusable building materials and supplies. General home remodeling and construction supplies, leftover lawn and landscaping materials, aluminum windows; plywood, 2x4s or any width, but 5ft or longer, kitchen sinks and faucets, stainless steel or cast iron; anything metal, brass, copper, etc. Latex paint that is less than a year old. If EcoStores are overstocked with any particular item we may not be able to accept it. We will have a list of items they will take. ([www.ecostoresne.org](http://www.ecostoresne.org)). EcoStores is located at 530 W. P Street, 402-477-3606

FREE brush disposal is offered again this year by Scott Hofeling, longtime Lincoln Arborist with Hofeling Enterprises. Take your brush to them for FREE on Saturday, May 12th when you bring it to their location at 2200 South Folsom Court. While you are there, check out the great wood mulches they have for sale at a low cost. Please

express your gratitude while dropping off your brush since they are saving us grant money. Coupons for free brush disposal at the city landfill are available during cleanup. The coupons may be used to take a load for free (normally \$11 and up) from now until the end of the summer. The coupons will not be accepted for commercial use, trash, leaves or yard waste.

**Items we CANNOT take:** Household garbage, (dispose during the curbside trash pickup) Household Hazardous waste including oil, chemicals, paints (that are not accepted at EcoStores), etc. Lawn waste, Grass clippings, Leaves, Liquids of any kind; Ammunition/explosives; automotive waste; televisions, microwaves, heavy metals (thermostats, thermometers); paint or solvents; pesticides; propane tanks & gas cylinders; unidentified containers of waste. PLEASE TAKE THESE ITEMS TO A HOUSEHOLD HAZARDOUS WASTE COLLECTION. See Calendar on page 12.

See you at the cleanup! If you have any questions or comments please contact the WNA Cleanup chairs: Mike Kreikemeier 402-477-9194, [mbk@windstream.net](mailto:mbk@windstream.net), or Bryan Hurst 402-441-6712, [bbacon.hurst@gmail.com](mailto:bbacon.hurst@gmail.com). Thank you in advance to all volunteers, sponsors and participants. Look for our cleanup report in the next Witherbee Buzz.

## MIDTOWN LINCOLN

5010 "O" STREET

### HyVee Pharmacy

402.465.0413

8 a.m. to 10 p.m. M-F  
9 a.m. to 6 p.m. Sat  
10 a.m. to 6 p.m. Sun

- Drive Thru
- Free Delivery
- Flu Vaccinations

**\$4** OR **\$10**

**30-day 90-day**

**Convenience, Care and Counseling.**

Ask your Lincoln Hy-Vee pharmacist or your physician if your medication is available in generic form. Go to [hy-veepharmacy.com](http://hy-veepharmacy.com) for a complete list. Some restrictions may apply. Not applicable with all insurance plans.

Transferring prescriptions has never been so easy. Just visit or call your Lincoln Hy-Vee Pharmacy and we will do all the work!

### HyVee Pharmacy



**327-0705**

Hours:  
M.-F. 8-6  
Sat. 8-12

**Jeff Jacobson, DVM**  
4145 "O" Street

Visit our website for useful information about your family pet. We Care.  
[www.jacobsonvet.com](http://www.jacobsonvet.com)





Dawn and Jeff Worrall with grandson, Aiden

## Witherbee Park Gets April YOM Sign

Hello, I'm Jeff Worrall, a board member of the Witherbee Neighborhood Association. I'm excited that spring is here again! I've washed off the Yard of the month sign, and for the second year will look for deserving yards for the award of "Yard of the Month".

My wife (Dawn) and I enjoy walking the neighborhood, meeting new people and seeing the changes that everyone is making to their yards. If you know of a deserving friend, neighbor or family member please do not hesitate to call me and leave a message at (402) 601-5269 or email me at [jworrall05@gmail.com](mailto:jworrall05@gmail.com). You can also visit me (us) at our Witherbee Neighborhood face book page or the Witherbee Website- [witherbeena.org](http://witherbeena.org).

Witherbee Park receives April's Yard of the Month recognition for the bright tulips and daffodils that bloomed brightly for all to see! They can't be missed at 46th & O.

Thanks and hope to see you in the neighborhood,  
Your Witherbee Neighbor Jeff Worrall

## Family Fun Night

### Randolph Elementary School

**Friday, May 11th from 5 to 8 p.m.**

Please join us for food and fun at our biggest fundraiser of the year. There are activities for everyone to enjoy, young or old. Here is a list of some of the activities: Inflatables, Silent Auction, Bake Sale, Dunk Tank, Clowning Around Clowns doing face painting, Color Hair Spray, Pop & Candy Walk, Carnival Games and so much more! Runza Rex, and Saltdogs' Homer will be mingling among the crowd too. Please come and support the Randolph PTA. If you have any questions please contact Julie Trembley, PTA President, after 3 p.m. at 402-217-1873. We hope to see you there! Also, if you are interested in volunteering for this event we would love the help. Please contact Shawna at [shawna\\_na\\_na6@yahoo.com](mailto:shawna_na_na6@yahoo.com) for volunteer information.

## WNA Calendar

*Membership not required for any meeting.*

**Monday Evenings** — 6 p.m. to 7 p.m. "Our Street" on KZUM 89.3. Shawn Ryba and Lynn Fisher focus on issues facing Lincoln neighborhoods. *New program will air each Monday.*

**Thursday, May 3rd** — 7 to 9 p.m., WNA monthly meeting, Richard Graham (see page 1). Tabitha LifeQuest Center conference room, 48th and J Sts.

**Friday, May 11th** — 5 p.m. to 8 p.m. Randolph Elementary Family Fun Night. (see column below to the left)

**Saturday, May 12th** — Witherbee Neighborhood Clean Up Day, 8:00 a.m. to 12:00 p.m. at Bryan Community School. (see page 1)

**Thursday, May 17th** — 5:30 p.m. Councilman Doug Emery's Citizen information meeting. Anderson Library, 3635 Touzalin Avenue.

**Sunday, May 27th** — 6 p.m. Stuhr Park Potluck.

**Thursday, June 7th** — 7 to 9 p.m. WNA monthly meeting. Diane Bartels from the Wyuka Historical Foundation to speak (see page 4). Tabitha LifeQuest Center conference room, 48th and J Sts.

**Friday, June 8th** — Hazardous waste collection, Union College Parking Lot, 52nd and Cooper, or by appointment Call Dan King 402-441-8084.

**Sunday, June 17** — 6 p.m. Stuhr Park Potluck.

**Thursday, July 5th** — 7 to 9 p.m. WNA monthly meeting. Featuring MembersOwn Credit Union. (see page 4). Tabitha LifeQuest Center conference room, 48th and J.

**Sunday, July 8th** — 6 p.m. Stuhr Park Potluck.

**Date to be announced** — Grande opening of Witherbee Park being planned and will be promoted on the WNA website and facebook page. Watch for details there.

**Coming this Fall** — WNA garage sales.

## American Indian Children Offered Help

Do you want health care for your children, but cannot afford it?

The Ponca Tribe of Nebraska is here to help! At no cost to you, Children's Medicaid Case Workers can:

- Fill out applications and paper work
- Assist you in any location, even your home!
- Provide accurate information on Medicaid
- Outreach and referrals available
- Ability to speak with state workers on your behalf.

Call 402-438-9222 (Kristina) [kmilburn@poncatribene.org](mailto:kmilburn@poncatribene.org) Children do NOT need to be enrolled members of ANY tribe-Someone in family must identify themselves as American Indian.