



The Witherbee Buzz

Vol. 19 No. 3 Newsletter

Fall 2022

The Witherbee Neighborhood Association includes the area bounded by 33rd to 56th and Randolph to "O" Streets

Ed Zimmer Returns with a Talk about the History of Woods Park

November Meeting Highlight

Our annual meeting and celebration will be held Thursday, November 10th, 7 pm at Redeemer Lutheran Church, 510 S 33rd St. We will meet in the Family Education Center. The entrance will be clearly marked.

Ed Zimmer, City Historian and retired Historic Preservation Planner for Lincoln & Lancaster County will join us and provide a presentation on the history of Woods Park. More specifically he will speak



on the "Rogers Tract," its transformation into Woods Park, and some of the early plans and subsequent developments.

Following the presentation we will elect board members and officers for the coming year. That will be followed by dessert and social time.

Plan to join us across the street from Woods Park at Redeemer Lutheran Church November 10th at 7 pm. This is a meeting you will not want to miss!



See Inside Stories:

- Ms. Efficiency Here to Help** pg. 3
- FitLot Dedication at Woods Park** pg. 4
- Trees Planted at Woods Park** pg. 4
- Neighborhood Art Professor Show** pg. 5
- Yard of the Month** pg. 6
- Holiday Lighting Contest 2022** pg. 6
- Tabitha's New Construction** pg. 7
- Pool & Ice Cream Party Blast** pg. 8

WNA Calendar of Events

- Nov. 8 Election Day VOTE!
- Nov. 10 Annual Meeting with election of board members & officers
Ed Zimmer will speak on the history of Woods Park, Desserts served!
7 pm at Redeemer Lutheran Church (510 S 33rd St.)
- Nov. 16 Holiday Extravaganza & Silent Auction - Bryan Community Focus Program at Hawthorne School 3:30 - 7:30 pm
- Dec. 1 WNA Monthly Meeting, 7 pm
Woods Tennis Center Conference Room
- Dec. 16-18 Holiday Lighting Contest Judging
- January 5 WNA Monthly Meeting, 7 pm
Woods Tennis Center Conference Room

About Your Witherbee Neighborhood Association

Boundaries:

33rd to 56th & 'O' to Randolph

Meetings:

7:00 p.m. first Thursday of each month. Check our Facebook page or website for meeting location.
www.facebook.com/witherbeena
www.WitherbeeNA.org

Mailing Address:

PO Box 5431
Lincoln, NE 68505
402-413-0156

Executive Board:

Kathy Holland, President
402-310-9153
rh30222@windstream.net

Mike Kreikemeier, Vice President
402-802-7865
mbk@windstream.net

Sherry Miller, Secretary
kitty66hawk@gmail.com

Mary Schwab, Interim Treasurer
402-440-4131
maryschwab3510@gmail.com

Additional Board Members:

Jay Ridenour
402-613-3232
jridemc@hotmail.com

Rick Bagby
402-488-8567
witherbeerick@gmail.com

Christine Nesmith
402-484-7673
jeepn68@gmail.com

Mary Rowan
402-483-2473
marymrowan@yahoo.com

Tim Duey
402-617-7998
tduey1@yahoo.com

Ryan Patrick
609-571-2942
ryan.s.pat@gmail.com

Julie Flodman
402-805-9902
jsiffring@yahoo.com

Dawn Bevans
paisleydragon@gmail.com

Newsletter assistance:

April Stevenson
aprilannstevenson@gmail.com



President's Message

As I write this we're just turning the calendar from September to October. I am ready for fall!

Thanks to all who joined us for our Pool Party & Ice Cream Social in early August. I heard many positive comments about the evening. We were fortunate that it was hot enough to enjoy swimming but cooled down throughout the evening so we didn't melt eating ice cream. Many thanks to Mary Schwab who coordinated the event this year as she has done for several years!

Our nominating committee has been busy contacting prospective board members. If you would like to serve and were not contacted, please call or email me or a current board member. We are in need of individuals who would like to serve at the grassroots level as far as city issues, plan events that connect us or plan educational events. These are just a few examples of the opportunities available.

As are most volunteer organizations, we are in need of individuals who would like to work towards leadership positions. But we also need individuals who just want to help with one event or activity. If you have questions about what's involved and the time required please reach out to one of our board members.

As we begin to think about plans for 2023, let us know what you would like our association to make a priority. We tentatively plan to include a survey as a part of our membership mailing in February. We hope you will take time to complete it.

With gratitude,
Kathy Holland
WNA President 2022

Redeemer Lutheran Church

510 South 33rd Street,
www.redeemerlincoln.org

ThankChurchsgiving Worship Services
Wednesday, Nov. 23, 7:00PM
Thursday, Nov. 24, 9:00AM

◆
Advent Worship Services
Wednesdays: Nov. 30-Dec. 14, 6:30PM

◆
Christmas Eve
Service of Lessons and Carols
2:30, 4:30 & 6:30PM

◆
Christmas Day
Worship with Holy Communion
9:00AM

◆
New Years' Eve
Worship with Holy Communion
6:30PM

A Professional Can Help with Decluttering and Organizing

Want a closet makeover? Do you have boxes of things you forgot you owned? Can't park your car in the garage? Piles of paperwork taking over your dining room table and kitchen counters? Ms. Efficiency has simple solutions to tackle those trouble spots.

Amy Fisher – a.k.a. Ms. Efficiency – is a Professional Organizer with over 21 years of experience helping her clients declutter their homes and simplify their lives. She utilizes all of her greatest strengths as an organizer, while at the same time offers help to overworked, overscheduled people who really need an extra pair of hands.

Unsure about a Professional Organizer? As your “coach”, Amy will support you in making decisions about what to keep and “give you permission” to let go of the things you’re holding on to. Amy says, “working together with you, we will come up with a game plan that works for you.”



Among the tips for decluttering and organization: Tackle your “hot spot” (most annoying) first. Sort items into three categories: donate, recycle/trash, and keep. Schedule time each day to tackle at least one action item on the “To-Do” list. Never set the mail down: mark events on your calendar; put bills in a designated spot; recycle the junk mail.

Ms. Efficiency is often called to help people sort through possessions as they walk a fine line between sentimental vs. the practical value of objects. Her goal is to help you get started and then break through the feeling of being overwhelmed. Remember, we all need a little help now and then!

Ms. Efficiency is happy to give you an estimate during your free initial consultation on the amount of time required and the charge for her services. The process is absolutely confidential and she can provide references.

Ms. Efficiency
Professional Organizer Extraordinaire

Free initial consultation
402-601-6676
ms_efficiency@hotmail.com

Dr. Jacobson
VETERINARY CLINIC, P.C.

327-0705
Hours:
M.-F. 8-6
Sat. 8-12

Jeff Jacobson, DVM
4145 “O” Street
Visit our website for useful information about your family pet. We Care.
www.jacobsonvet.com

Join us at WitherbeeNA.org
or on Facebook
for more information

Holiday Loan

Apply today for a personal new money loan, up to \$3,500, twelve month repayment plan, at an interest rate as low as 2.90% APR*!

You choose the reason!
~ Christmas Bills ~
~ Winter Vacation ~
~ Home or Car Repairs ~

Loan Promotion available 11/01/22-12/30/22

*APR = Annual Percentage Rate. Certain restrictions apply, see Credit Union for details. All loans subject to approval. Rates, terms and conditions subject to change and vary based on creditworthiness and qualifications. New money loans only. Must qualify for personal allowance. Final rate is based on credit score. Maximum loan amount is \$3,500. Payment example: \$3,500 personal loan with a 12 month term at 2.90% would have monthly payments of approximately \$296.28 per month. Cannot be combined with any other offer. Offer excludes all loans already financed at the Credit Union. Offer available November 1, 2022 to December 30, 2022.

Call Cheryl or Danielle @ 402.467.1102 to apply today!

325 N 52 St, Lincoln NE

Proudly serving Military, Federal, Postal Employees and their families.

Fitlot Dedication Held Sept. 27

A perfect day for the grand opening of the AARP-sponsored Outdoor Fitness Park with Mayor Leirion Gaylor Baird, Lincoln Parks and Recreation & Bike LNK. Thanks to everyone who joined AARP at Woods Park to celebrate this great new community playground for people of all ages!

AARP awarded the fitness park to the Parks and Recreation Department in 2020, but the dedication was postponed due to the pandemic.

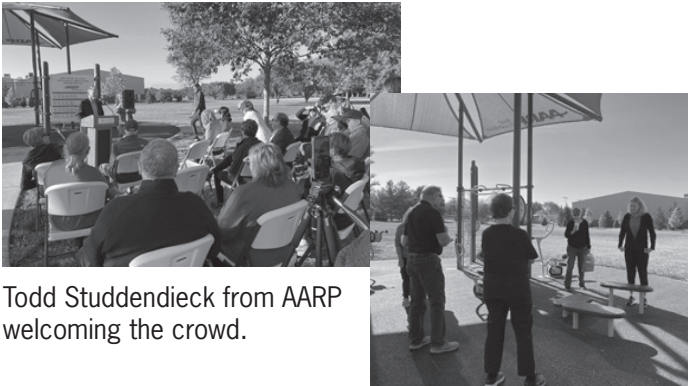
“In 2020 AARP sponsored the building of the outdoor fitness park in Lincoln, and we are finally able to gather here to use it,” said Todd Stubbendieck, AARP Nebraska State Director. “We hope Lincolniters will use this opportunity to visit Woods Park and make the AARP outdoor park part of their regular fitness routine.”

Instructor-led classes are offered at the Woods Park location through the fall:

Intro classes – These one-hour classes teach proper movement, safe equipment use, and the format of a FitLot circuit training class in a slow-paced, light-effort instructional setting. Classes are Tuesday & Thursdays at 10:30 a.m.

Drop-in classes – Participants experience a full FitLot circuit training workout. Classes are Fridays at 9 a.m.

Pre-registration is encouraged but not required. Participants must provide their own water and towel. Registration for all classes is available at fitlot.org/parks/lincoln.



Todd Stubbendieck from AARP welcoming the crowd.

Jesse, the Fitlot instructor, introducing attendees to the equipment.

Woods Park Trees Planted by Volunteer Neighbors

Woods Park: Keep It Green had 15 volunteers who planted 25 trees October 4th, between the pool and baseball field, north of the tennis courts and among the grove of crab apples. It was efficient and fun!



Charlie Troxel, Jane Raglin Holt & Chris Nielsen planting behind the baseball field.

Joan Rouse and Cindy Copich at work.

Community Learning Center at Lefler Looking for Volunteers

The Community Learning Center at Lefler is in need of talented individuals who would enjoy sharing a hobby or skill with students at one of their after school clubs. New clubs are being formed throughout the school year. Some of their current clubs are sports related or involve gardening, crafts or reading. Individuals would be paid for their time in the range of \$13.00 – \$20.00 per hour. The Community Learning Center (CLC) at Lefler is coordinated by the YMCA of Lincoln.

For more information, please contact Maria Galmez, Youth, Teen and Family Program Director, Lefler CLC at Mgalmez@ymcalincoln.org or call 402-434-9262.



It's all about you!

On the corner of 33rd and A Streets.

Locally owned by our members who live, work, worship and attend school in Southeast Nebraska.

402.436.5365 www.MembersOwnCU.org

Lincoln Pharmacy

Your Friendly Community Pharmacy!

3300 A Street • Open M-F: 9am-7pm / Sat: 10am-4pm

Easy prescription transfer Just Call!

402-817-7978

- Free Delivery • Full Service • Personalized Care •
- All Major Insurances • Medicare/Medicaid •
- Drive Thru Window •

Neighborhood Art Professor's Work on Display

In this edition of *the Buzz*, we are featuring a long-time resident of Witherbee, Patrick Rowan. Pat is a retired professor from the Art Department at UNL and currently has an exhibit of his work at the City /County Exhibition Gallery. The show, entitled, "A Finish Worthy of the Start", a retrospective representation, will be on display through the end of November.

Pat was born and raised on the shores of Lake Michigan in Milwaukee Wisconsin. He was born in 1937, the year the lake froze over, he likes to point out. After completing service with the Navy he returned to academia to earn a degree in architecture. He then proceeded to earn Bachelor of Fine Arts degree and a Masters in painting and sculpture.

Pat has lived and worked in Lincoln for 52 years, 40 of those in the Witherbee neighborhood on Lenox Ave raising a family with wife Mary, surrounded by wonderful neighbors and friends. He feels very fortunate to have called Lincoln his home and has enjoyed Nebraska, "The Good Life" all these years.

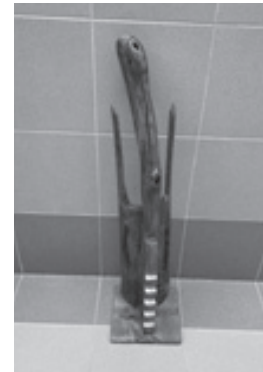


During his 33 years as a Professor in the Art Department he taught a variety of classes including drawing, design, painting and sculpture at the undergrad and graduate levels. During his career at UNL Pat has been a practicing artist, painter and sculptor using a variety of media in a representational way as well as abstract format, depending upon the desired message and effect.

Many of his sculptures are carved from driftwood logs found on the shores of Lake Michigan and the Lewis and Clark Lake which is bordered by Nebraska and South Dakota. His pieces are very tall and dynamic, taking many hours of work and a variety of tools and processes to complete.

Patrick's art work has been shown in 170 invited exhibitions of paintings and sculptures in the U.S. and Europe. His work has also been shown in 35 public and private collections.

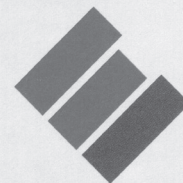
Pat's work can be viewed at the County-City Exhibition Gallery on the first floor of the City/County Building, 555 S. 10th St., Monday-Friday, 8 a.m. – 4:30 p.m.



1st market
Your friendly & convenient neighborhood store

On the corner of 33rd and "A"
402-477-3633 • astreetmarket.strikingly.com
Find us on Instagram and Facebook @

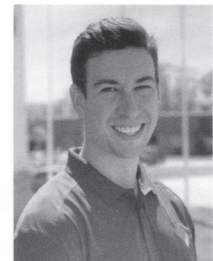
Full service grocery store open 7am-10pm everyday!
Fresh Randy's donuts & coffee daily • "Grab & Go" hot soup & sandwiches • Best meat & produce in town!



EppConcrete

WE FIX BASEMENTS

3128 S 6th St. Lincoln, NE 68502
Office: 402.423.9192
dalton.cruz@epconcrete.com



Dalton Cruz
Foundation Specialist
Cell: 402.429.9078

Yard of the Month

The August Yard of the Month is the lovely home and gardens of Jordan and Kelsie Jensen and 2 year old Evelyn. They have resided at 385 South 55th for 10 years. Jordan worked at Earl May's, but two years ago, he started his own business, Ponderosa Landscaping. Be sure to check out the very creative sign in front made by his mother. Kelsie does the scheduling and bookkeeping for their company. They, also, grow cut flowers for Kelsie to sell at different venues.



She has a quaint pickup referred to as "Hattie, The Flower Truck" that holds the containers of flowers.

The gardens are quite impressive with lovely, appropriate choices for different areas. Towering ash and pin oak trees in front provide shade for the hosta, astilbe, brunnera, variegated dogwood, and variegated euonymus. The beds are lined with repurposed blocks, giving the beds a clean and tidy

appearance. Jordan talked about taking orphan plants and nursing them back. Pay notice to the glorious tree hydrangeas along the back fence and the 6-stem birch visible in the backyard. One of the few original plants is the large magnolia by the driveway; it's expertly limbed up and provides much shade over the house. Jordan has planted several trees in the parkway, in preparation for the possible loss of the old ash tree on the corner.



When asked what he and his family like about the Witherbee Neighborhood, he said "it's a quiet area with good neighbors that they have become acquainted with over the years".

Holiday Lighting Contest 2022

This is your October reminder about the Witherbee Holiday Lighting Contest—coming soon! We will, indeed, be highlighting some of our neighbor's holiday outdoor decorations in December. The categories for awards this year will be:

- Traditional/Simple Elegance Award
- Lincoln Electric System Superior Customer Award (most lights)
- Visions of Sugar Plums Award (kid favorite)
- Reason for the Season Award

Our judges typically take the liberty of adding a category or two. When the time comes we will need nominations from the neighborhood. You may nominate yourself, a neighbor across the street, down the block or anywhere in the Witherbee neighborhood. The tentative dates for judging will be the weekend of December 16-18 (Friday through Sunday evening). Please email your nominations to the WNA email: witherbeena@gmail.com or call 402-413-0156. Watch for more information on our Facebook page as the holidays get a little closer.



TABITHA

**Rehabilitation
Home Health
Senior Living
Hospice**


Your Answer for Senior Care

CONTACT A SENIOR CARE EXPERT
402.486.8520 | TABITHA.ORG

**BENNIE
SHOBE**

LINCOLN CITY COUNCIL

Working with Neighbors



Building Community

Tabitha's New Way of Living is Under Construction

Construction and public interest continues to gain momentum for Tabitha's first-of-its-kind InterGenerational Living Community. In the heart of the Witherbee Neighborhood at 47th and 'L' Streets the foundation is poured and building is underway.

Tabitha plans to open the doors of 128 apartment suites to independent Seniors (55+) and Bryan College of Health Sciences Students in the Fall of 2023.

With less than a year remaining to bring the project to fruition, 15 Senior residents have already reserved their apartment suites and 26 will be dedicated to Students. Apartments feature convenient in-suite laundry, are pet friendly and garage parking is also available.

This community by design is centered around intentional neighboring. There will be plenty of spaces and opportunities to bring Seniors and Students together. The building will have many welcoming gathering spots such as a main kitchen, fitness center, outdoor fire pit, rooftop terrace and patio surrounded by beautiful green spaces.

Want to live a more maintenance-free lifestyle while still maintaining your great Witherbee neighbors and roots? Contact a Tabitha Senior Living Advisor today at 402.486.8530 to learn how you can call this beautiful community—HOME. TABITHA.org/InterGen



HuVee[®]
EMPLOYEE OWNED

Full service floral

Pharmacy

Chinese

Italian

Bakery

produce

kitchen & delicatessen

full service meat and seafood

5010 'O' • 402-483-7707

West Gate Bank
Has An Account For Everyone

From Completely FREE Checking to High Interest Checking, you'll get access to all of the account features you want without the added fees:

- No monthly service charge
- FREE* Online Banking with Account Alerts
- Unlimited ATM withdrawals world-wide**
- And more!

Visit our website at westgate.bank for our full lineup of accounts and features.

WEST GATE BANK.
Our interest is you

*Your cell phone provider may charge additional fees for web access or text messaging.
**Other institutions may impose a fee for the use of their ATMs.

Member
FDIC
EQUAL OPPORTUNITY LENDER

Cooperation Makes the Pool Party and Ice Cream Social a Huge Success

Witherbee Neighborhood Association, Redeemer Lutheran Church and LPS Community Learning Centers co-hosted the annual WNA Pool Party & Ice Cream Social on Sunday, August 7th at Woods Park. The Woods Park Neighborhood was invited to attend.

The weather cooled to a nice sunny evening as 294 swimmers and over 400 bowls of ice cream brought together neighbors from the 3300 homes that border all sides of Woods Park.

Tunes from Complete Music added an upbeat atmosphere, pausing only to award over \$500 of prize drawings throughout the evening. Fun activities drew kids to the Community Learning Center display. The Little Free Pantries provided information as well as gathered food donations for distribution throughout both neighborhoods. The

first annual corn hole tournament will be looking for more teams to join the fun next year, and of course, everyone's favorite activity was visiting with and meeting new neighbors!

26 gallons of ice cream, donated by Super Saver, Hy-Vee and A St Market, were served by volunteers from both neighborhoods.

Thanks to: Redeemer Lutheran for renting the pool, City Parks Department for the wonderful hub for neighbors of Woods Park to gather. Thanks to Kevin Heim of Woods Tennis and all the volunteers of Witherbee and Woods Park Neighborhoods who made this evening a success.

This Witherbee pool party, in its 15th year, was the largest ever and hopefully will expand into more inclusive events in the future.



The large crowd eating ice cream after the pool closed at 7:30.



Randy Smith, Woods Park president, Mary Schwab from Witherbee & LPD officer



Chris Booe at the Free Little Pantries table.



Welcome table: Sandy Hoffart & Mary Woodward



Dedicated ice cream servers hard at work.



Jenee Kucera at CLC's photo booth.